

MEK1/2 RABBIT MAB

Cat.#: N262506

Product Name: Anti-MEK1/2 Rabbit Monoclonal Antibody

Synonyms: MAP2K1; MEK1; PRKMK1; Dual specificity mitogen-activated protein kinase kinase 1; MAP kinase kinase 1; MAPKK 1; MKK1; ERK activator kinase 1; MAPK/ERK kinase 1; MEK 1; MAP2K2; MEK2; MKK2; PRKMK2; Dual specificity mitogen-activated protein k

UNIPROT ID: Q02750/P36507

Background: Dual specificity protein kinase which acts as an essential component of the MAP kinase signal transduction pathway. Binding of extracellular ligands such as growth factors, cytokines and hormones to their cell-surface receptors activates RAS and this initiates RAF1 activation. RAF1 then further activates the dual-specificity protein kinases MAP2K1/MEK1 and MAP2K2/MEK2.

Immunogen: Recombinant protein of human MEK1/2

Applications: WB,IHC-F,IHC-P,ICC/IF,IP

Recommended Dilutions: WB: 1/500-1/1000 IHC: 1/50-1/100 IF: 1/50-1/200 IP: 1/20

Host Species: Rabbit

Clonality: Rabbit Monoclonal

Clone ID: R08-6A7

MW: Calculated MW: 43,44 kDa; Observed MW: 43,44 kDa

Isotype: IgG

Purification: Affinity Purified

Species Reactivity: Human,Mouse,Rat

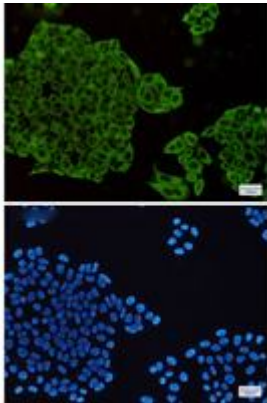
Conjugation: Unconjugated

Modification: Unmodified

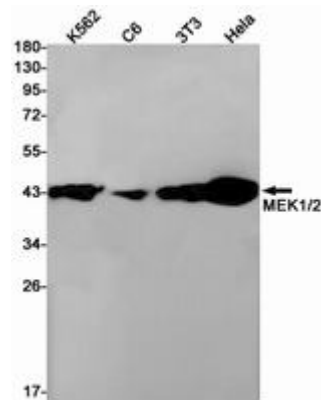
Constituents: PBS (without Mg²⁺ and Ca²⁺), pH 7.3 containing 50% glycerol, 0.5% BSA and 0.02% sodium azide

Research Areas: Signal Transduction

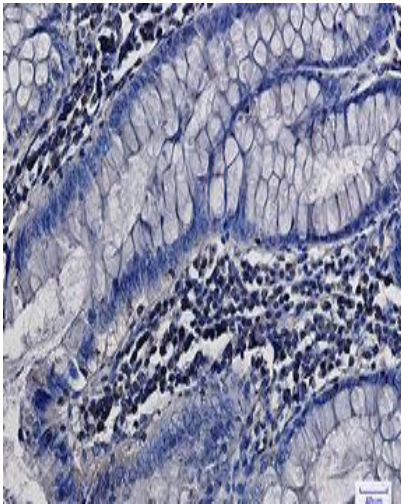
Storage & Shipping: Store at -20°C. Avoid repeated freezing and thawing



Immunocytochemistry analysis of MEK1/2 (green) in HeLa using MEK1/2 antibody, and DAPI (blue)



Western blot analysis of MEK1/2 in K562, C6, 3T3, HeLa lysates using MEK1/2 antibody.



Immunohistochemistry analysis of paraffin-embedded Human colon cancer using MEK1/2 antibody. High-pressure and temperature Sodium Citrate pH 6.0 was used for antigen retrieval.