

MEK3/MEK6 RABBIT MAB

Cat.#: N263620

Product Name: Anti-MEK3/MEK6 Rabbit Monoclonal Antibody

Synonyms: MEK6; MKK6; MAPKK6; PRKMK6; SAPKK3; MAP2K6; MEK3; MAP kinase kinase 3; MAPKK3; MAPK/ERK kinase 3

UNIPROT ID: P46734/P52564

Background: Dual specificity kinase. Is activated by cytokines and environmental stress in vivo. Catalyzes the concomitant phosphorylation of a threonine and a tyrosine residue in the MAP kinase p38.

Immunogen: A synthesized peptide derived from human MEK3/MEK6

Applications: WB, ICC/IF, IP

Recommended Dilutions: WB: 1/500-1/1000 IF: 1/50-1/200 IP: 1/20

Host Species: Rabbit

Clonality: Rabbit Monoclonal

Clone ID: R04-210

MW: Calculated MW: 39,37 kDa; Observed MW: 39,37 kDa

Isotype: IgG

Purification: Affinity Purified

Species Reactivity: Human, Mouse

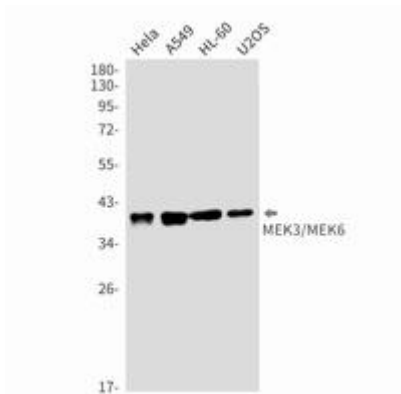
Conjugation: Unconjugated

Modification: Unmodified

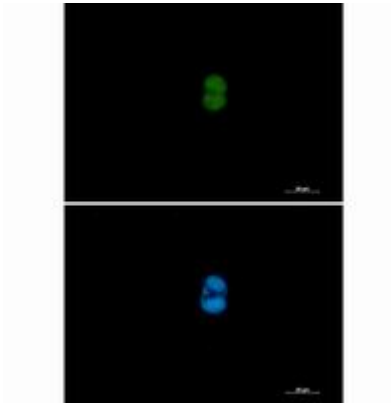
Constituents: PBS (without Mg²⁺ and Ca²⁺), pH 7.3 containing 50% glycerol, 0.5% BSA and 0.02% sodium azide

Research Areas: Signal Transduction

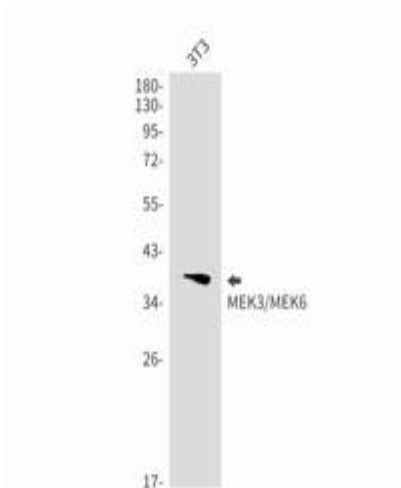
Storage & Shipping: Store at -20°C. Avoid repeated freezing and thawing



Western blot analysis of MEK3/MEK6 in HeLa, A549, HL-60, U2OS lysates using MEK3/MEK6 antibody



Immunocytochemistry analysis of MEK3/MEK6 (green) in HCT116 using MEK3/MEK6 antibody, and DAPI (blue).



Western blot analysis of MEK3/MEK6 in 3T3 lysates using MEK3/MEK6 antibody. Observed band size: 39, 37kDa.