

MEK3 RABBIT MAB

Cat.#: N262507

Product Name: Anti-MEK3 Rabbit Monoclonal Antibody

Synonyms: AW212142; dual specificity mitogen activated protein kinase kinase 3; Dual specificity mitogen activated protein kinase kinase 6; Dual specificity mitogen-activated protein kinase kinase 3; MAP kinase kinase 3; MAP kinase kinase 6; map2k3; MAP2K6; MAPK ERK kinase 3; MAPK/ERK kinase 3; MAPK/ERK kinase 6; MAPKK 3; MAPKK 6; MAPKK3; MAPKK6; MEK 3; MEK 6; MEK3; Mitogen activated protein kinase kinase 3; Mitogen activated protein kinase kinase 6; MKK 3; MKK3; MKK6; mMKK3b; MP2K3_HUMAN; PRKMK 3; PRKMK3; PRKMK6; Protein kinase; mitogen activated; kinase 6 (MAP kinase kinase 6); protein kinase; mitogen-activated; kinase 3; SAPK kinase 2; SAPKK 2; SAPKK 3; SAPKK-2; SAPKK2; SAPKK3; Stress activated protein kinase kinase 2; Stress activated protein kinase kinase 3; Stress-activated protein kinase kinase 2.

UNIPROT ID: P46734

Background: Dual specificity kinase. Is activated by cytokines and environmental stress in vivo. Catalyzes the concomitant phosphorylation of a threonine and a tyrosine residue in the MAP kinase p38.

Immunogen: Recombinant protein of human MEK3

Applications: WB, ICC/IF, IP

Recommended Dilutions: WB: 1/500-1/1000 IF: 1/50-1/200 IP: 1/20

Host Species: Rabbit

Clonality: Rabbit Monoclonal

Clone ID: R06-1F1

MW: Calculated MW: 39 kDa; Observed MW: 38-40 kDa

Isotype: IgG

Purification: Affinity Purified

Species Reactivity: Human, Mouse, Rat

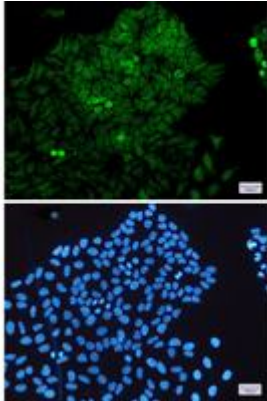
Conjugation: Unconjugated

Modification: Unmodified

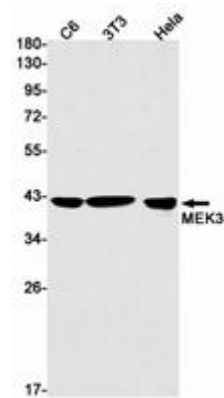
Constituents: PBS (without Mg²⁺ and Ca²⁺), pH 7.3 containing 50% glycerol, 0.5% BSA and 0.02% sodium azide

Research Areas: Signal Transduction

Storage & Shipping: Store at -20°C. Avoid repeated freezing and thawing



Immunocytochemistry analysis of MEK3 (green) in HeLa using MEK3 antibody, and DAPI (blue)



Western blot analysis of MEK3 in C6, 3T3, HeLa lysates using MEK3 antibody.