

MEKK2 RABBIT MAB

Cat.#: N262508

Product Name: Anti-MEKK2 Rabbit Monoclonal Antibody

Synonyms: MAP3K2; MAPKKK2; MEKK2; Mitogen-activated protein kinase kinase kinase 2; MAPK/ERK kinase kinase 2; MEK kinase 2; MEKK 2

UNIPROT ID: Q9Y2U5

Background: The protein encoded by this gene is a member of serine/threonine protein kinase family. This kinase preferentially activates the kinases involved in the MAP kinase signaling pathway including MAPK7 and MAP2K4. This kinase has been shown to directly phosphorylate and activate I κ B kinases (IKKs), and thus plays a role in NF- κ B signaling pathway. This kinase has also been found to bind and activate protein kinase C-related kinase 2 (PRKCL2/PRK2), which suggests its involvement in PRKCL2 regulated signaling process.

Immunogen: A synthetic peptide of human MEKK2

Applications: WB,ICC/IF,IP

Recommended Dilutions: WB: 1/500-1/1000 IF: 1/50-1/200 IP: 1/20

Host Species: Rabbit

Clonality: Rabbit Monoclonal

Clone ID: R06-2K7

MW: Calculated MW: 70 kDa; Observed MW: 70 kDa

Isotype: IgG

Purification: Affinity Purified

Species Reactivity: Human,Mouse,Rat

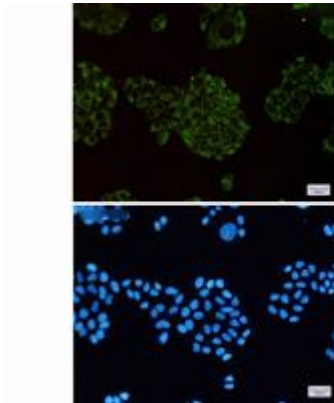
Conjugation: Unconjugated

Modification: Unmodified

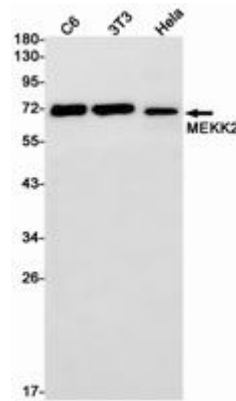
Constituents: PBS (without Mg²⁺ and Ca²⁺), pH 7.3 containing 50% glycerol, 0.5% BSA and 0.02% sodium azide

Research Areas: Signal Transduction

Storage & Shipping: Store at -20°C. Avoid repeated freezing and thawing



Immunocytochemistry analysis of MEKK2 (green) in HeLa using MEKK2 antibody, and DAPI (blue)



Western blot analysis of MEKK2 in C6, 3T3, HeLa lysates using MEKK2 antibody.