

MEKK2 RABBIT PAB

Cat.#: N225692

Product Name: Anti-MEKK2 Rabbit pAb

Synonyms: MAP3K2; MAPKKK2; MEKK2; Mitogen-activated protein kinase kinase kinase 2; MAPK/ERK kinase kinase 2; MEK kinase 2; MEKK 2

UNIPROT ID: Q9Y2U5

Background: The protein encoded by this gene is a member of serine/threonine protein kinase family. This kinase preferentially activates the kinases involved in the MAP kinase signaling pathway including MAPK7 and MAP2K4. This kinase has been shown to directly phosphorylate and activate I kappa B kinases (IKKs), and thus plays a role in NF-kappa B signaling pathway. This kinase has also been found to bind and activate protein kinase C-related kinase 2 (PRKCL2/PRK2), which suggests its involvement in PRKCL2 regulated signaling process.

Immunogen: A synthesized peptide derived from human MEKK2

Applications: WB,IHC-P,ICC/IF,IP,FC

Recommended Dilutions: WB: 1/500-1/1000 IHC: 1/50-1/100 IF: 1/50-1/200 IP: 1/20 FC: 1/50-1/100

Host Species: Rabbit

Clonality: Rabbit Polyclonal

Clone ID: -

MW: Calculated MW: 70 kDa; Observed MW: 70 kDa

Isotype: IgG

Purification: Affinity Chromatography

Species Reactivity: Human,Mouse,Rat

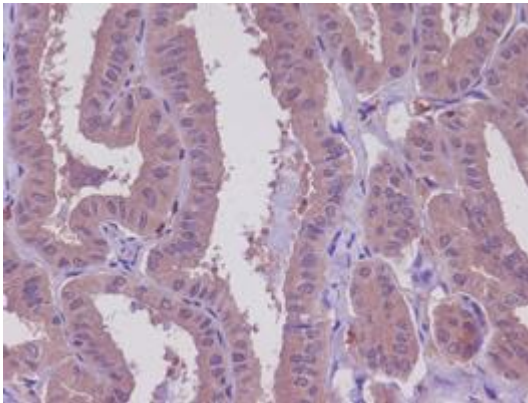
Conjugation: Unconjugated

Modification: Unmodified

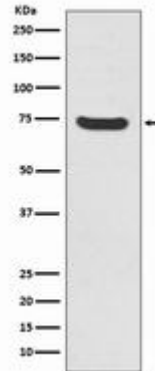
Constituents: PBS (without Mg²⁺ and Ca²⁺), pH 7.3 containing 50% glycerol, 0.5% BSA and 0.02% sodium azide

Research Areas: Signal Transduction

Storage & Shipping: Store at -20°C. Avoid repeated freezing and thawing



Immunohistochemistry analysis of paraffin-embedded Human thyroid cancer using MEKK2 antibody. High-pressure and temperature Sodium Citrate pH 6.0 was used for antigen retrieval.



Western blot analysis of MEKK2 in HeLa lysates using MEKK2 antibody.