

MELATONIN RECEPTOR 1A RABBIT PAB

Cat.#: N225511

Product Name: Anti-Melatonin Receptor 1A Rabbit pAb

Synonyms: MTNR1A; Melatonin receptor type 1A; Mel-1A-R; Mella receptor

UNIPROT ID: P48039

Background: This gene encodes one of two high affinity forms of a receptor for melatonin, the primary hormone secreted by the pineal gland. This receptor is a G-protein coupled, 7-transmembrane receptor that is responsible for melatonin effects on mammalian circadian rhythm and reproductive alterations affected by day length. The receptor is an integral membrane protein that is readily detectable and localized to two specific regions of the brain. The hypothalamic suprachiasmatic nucleus appears to be involved in circadian rhythm while the hypophysial pars tuberalis may be responsible for the reproductive effects of melatonin.

Immunogen: synthesized peptide of human MTR1A. AA range:191-240

Applications: ICC/IF,ELISA

Recommended Dilutions: IF: 1/50-1/200 ELISA: 1/10000

Host Species: Rabbit

Clonality: Rabbit Polyclonal

Clone ID: -

MW: -

Isotype: IgG

Purification: Affinity Purified

Species Reactivity: Human,Mouse,Rat

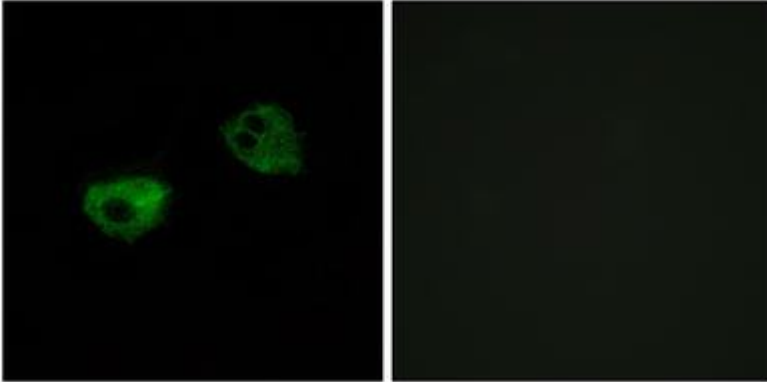
Conjugation: Unconjugated

Modification: Unmodified

Constituents: PBS (without Mg²⁺ and Ca²⁺), pH 7.3 containing 50% glycerol, 0.5% BSA and 0.02% sodium azide

Research Areas: Neuroscience

Storage & Shipping: Store at -20°C. Avoid repeated freezing and thawing



Immunofluorescence analysis of Melatonin Receptor 1A in HepG2 cells using Melatonin Receptor 1A antibody. Sample with blocking peptide on the right.