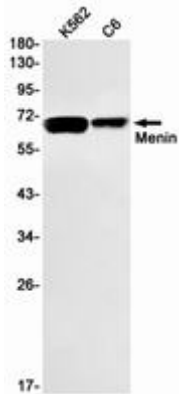


MENIN RABBIT MAB**Cat.#:** N261598**Product Name:** Anti-Menin Rabbit Monoclonal Antibody**Synonyms:** MEN1; SCG2; Menin**UNIPROT ID:** O00255

Background: Menin, the protein product of the MEN1 gene, is a component of the mixed-lineage leukemia protein (MLL)-containing histone methyltransferase complex that facilitates methylation of histone H3 Lys4 to promote transcriptional activation. Menin functions to suppress proliferation of pancreatic islet cells, at least in part through MLL-mediated activation of the p18INK4c (p18) and p27CIP/KIP (p27) cyclin-dependent kinase inhibitor genes.

Immunogen: A synthetic peptide of human Menin**Applications:** WB,IP**Recommended Dilutions:** WB: 1/500-1/1000 IP: 1/20**Host Species:** Rabbit**Clonality:** Rabbit Monoclonal**Clone ID:** R05-6A9**MW:** Calculated MW: 68 kDa; Observed MW: 68 kDa**Isotype:** IgG**Purification:** Affinity Purified**Species Reactivity:** Human,Rat**Conjugation:** Unconjugated**Modification:** Unmodified**Constituents:** PBS (without Mg²⁺ and Ca²⁺), pH 7.3 containing 50% glycerol, 0.5% BSA and 0.02% sodium azide**Research Areas:** Epigenetics and Nuclear Signaling**Storage & Shipping:** Store at -20°C. Avoid repeated freezing and thawing



Western blot analysis of Menin in K562, C6 lysates using Menin antibody.