

MESOTHELIN RABBIT MAB

Cat.#: N262509

Product Name: Anti-Mesothelin Rabbit Monoclonal Antibody

Synonyms: Pre-pro-megakaryocyte-potentiating factor; MPF

UNIPROT ID: Q61468

Background: Membrane-anchored forms may play a role in cellular adhesion.

Immunogen: Recombinant protein of mouse Mesothelin

Applications: WB,IP

Recommended Dilutions: WB: 1/500-1/1000 IP: 1/20

Host Species: Rabbit

Clonality: Rabbit Monoclonal

Clone ID: R09-4G5

MW: Calculated MW: 70 kDa; Observed MW: 40,70 kDa

Isotype: IgG

Purification: Affinity Purified

Species Reactivity: Mouse

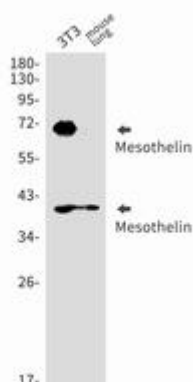
Conjugation: Unconjugated

Modification: Unmodified

Constituents: PBS (without Mg²⁺ and Ca²⁺), pH 7.3 containing 50% glycerol, 0.5% BSA and 0.02% sodium azide

Research Areas: Tags & Cell Markers

Storage & Shipping: Store at -20°C. Avoid repeated freezing and thawing



Western blot analysis of Mesothelin in 3T3, mouse lung lysates using Mesothelin antibody.



Product Description

Pioneering GTPase and Oncogene Product Development since 2010
