

MET RABBIT PAB

Cat.#: S220120

Product Name: Anti-MET Rabbit Polyclonal Antibody

Synonyms: HGFR; AUTS9; RCCP2; c-Met

UNIPROT ID: P08581 (Gene Accession - NP_000236.2)

Background: The proto-oncogene MET product is the hepatocyte growth factor receptor and encodes tyrosine-kinase activity. The primary single chain precursor protein is post-translationally cleaved to produce the alpha and beta subunits, which are disulfide linked to form the mature receptor. Various mutations in the MET gene are associated with papillary renal carcinoma. Two transcript variants encoding different isoforms have been found for this gene.

Immunogen: Synthetic peptide of human MET

Applications: ELISA, IHC

Recommended Dilutions: IHC: 25-100; ELISA: 2000-5000

Host Species: Rabbit

Clonality: Rabbit Polyclonal

Isotype: Immunogen-specific rabbit IgG

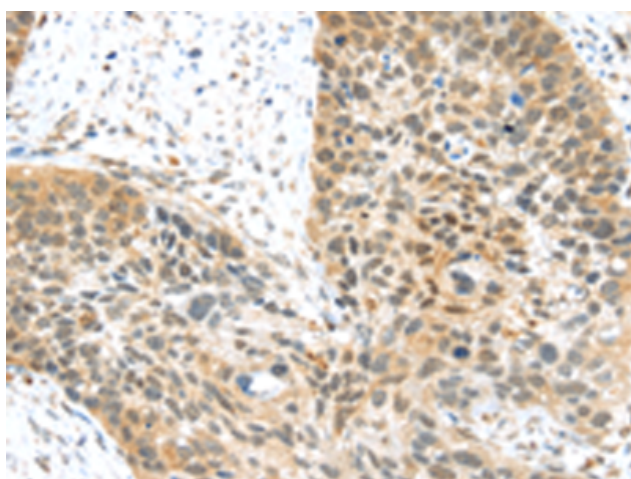
Purification: Antigen affinity purification

Species Reactivity: Human, Mouse, Rat

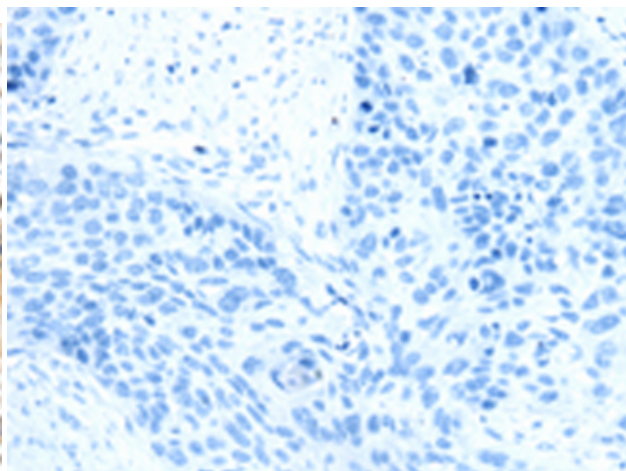
Constituents: PBS (without Mg²⁺ and Ca²⁺), pH 7.4, 150 mM NaCl, 0.05% Sodium Azide and 40% glycerol

Research Areas: Signal Transduction, Epigenetics and Nuclear Signaling, Cancer

Storage & Shipping: Store at -20°C. Avoid repeated freezing and thawing



Immunohistochemistry analysis of paraffin embedded Human esophagus cancer tissue using 220120 (MET Antibody) at a dilution of 1/25 (Cytoplasm and Nucleus).



In comparison with the IHC on the left, the same paraffin-embedded Human esophagus cancer tissue is first treated with the synthetic peptide and then with 220120 (Anti-MET Antibody) at dilution 1/25.