

METHYLMALONYL COENZYME A MUTASE RABBIT MAB

Cat.#: N262513

Product Name: Anti-Methylmalonyl Coenzyme A mutase Rabbit Monoclonal Antibody

Synonyms: MCM

UNIPROT ID: P22033

Background: Involved in the degradation of several amino acids, odd-chain fatty acids and cholesterol via propionyl-CoA to the tricarboxylic acid cycle. MCM has different functions in other species.

Immunogen: A synthetic peptide of human Methylmalonyl Coenzyme A mutase

Applications: WB,IHC-P

Recommended Dilutions: WB: 1/500-1/1000 IHC: 1/50-1/100

Host Species: Rabbit

Clonality: Rabbit Monoclonal

Clone ID: R05-3G4

MW: Calculated MW: 83 kDa; Observed MW: 83 kDa

Isotype: IgG

Purification: Affinity Purified

Species Reactivity: Human,Rat

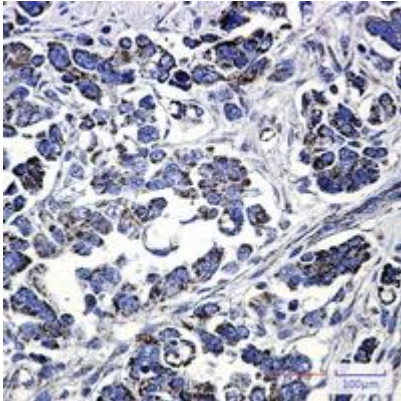
Conjugation: Unconjugated

Modification: Unmodified

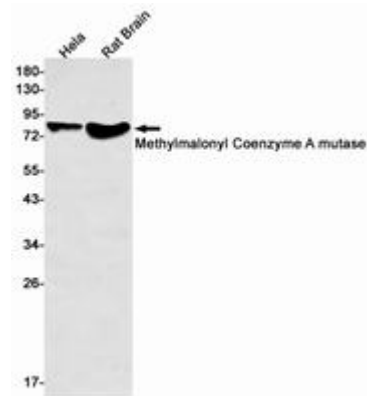
Constituents: PBS (without Mg²⁺ and Ca²⁺), pH 7.3 containing 50% glycerol, 0.5% BSA and 0.02% sodium azide

Research Areas: Signal Transduction

Storage & Shipping: Store at -20°C. Avoid repeated freezing and thawing



Immunohistochemistry analysis of paraffin-embedded Human Cholangiocarcinoma using Methylmalonyl Coenzyme A mutase antibody. High-pressure and temperature Sodium Citrate pH 6.0 was used for antigen retrieval.



Western blot analysis of Methylmalonyl Coenzyme A mutase in Hela, rat Brain lysates using Methylmalonyl Coenzyme A mutase antibody.