

## METRS RABBIT MAB

**Cat.#:** N262512

**Product Name:** Anti-MetRS Rabbit Monoclonal Antibody

**Synonyms:** MRS; ILLD; CMT2U; ILFS2; METRS; MTRNS; SPG70

**UNIPROT ID:** P56192

**Background:** Catalyzes the specific attachment of an amino acid to its cognate tRNA in a 2 step reaction: the amino acid (AA) is first activated by ATP to form AA-AMP and then transferred to the acceptor end of the tRNA.

**Immunogen:** A synthetic peptide of human Methionyl tRNA synthetase

**Applications:** WB,ICC/IF

**Recommended Dilutions:** WB: 1/500-1/1000 IF: 1/50-1/200

**Host Species:** Rabbit

**Clonality:** Rabbit Monoclonal

**Clone ID:** R02-2B7

**MW:** Calculated MW: 101 kDa; Observed MW: 101 kDa

**Isotype:** IgG

**Purification:** Affinity Purified

**Species Reactivity:** Human

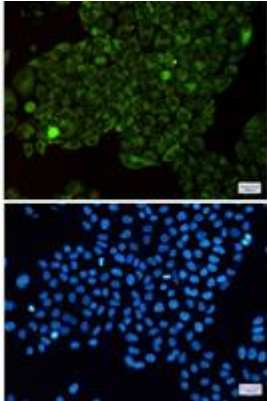
**Conjugation:** Unconjugated

**Modification:** Unmodified

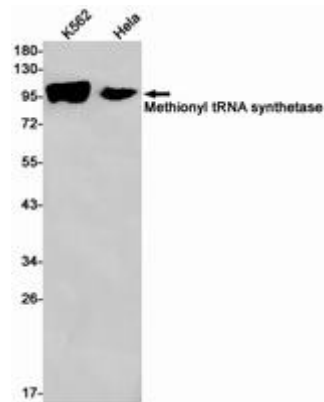
**Constituents:** PBS (without Mg<sup>2+</sup> and Ca<sup>2+</sup>), pH 7.3 containing 50% glycerol, 0.5% BSA and 0.02% sodium azide

**Research Areas:** Signal Transduction

**Storage & Shipping:** Store at -20°C. Avoid repeated freezing and thawing



Immunocytochemistry analysis of Methionyl tRNA synthetase (green) in HeLa using Methionyl tRNA synthetase antibody, and DAPI (blue)



Western blot analysis of Methionyl tRNA synthetase in K562, HeLa lysates using MetRS antibody.