

## METRS RABBIT MAB

**Cat.#:** N262489

**Product Name:** Anti-MetRS Rabbit Monoclonal Antibody

**Synonyms:** MRS; ILLD; CMT2U; ILFS2; METRS; MTRNS; SPG70

**UNIPROT ID:** P56192

**Background:** Catalyzes the specific attachment of an amino acid to its cognate tRNA in a 2 step reaction: the amino acid (AA) is first activated by ATP to form AA-AMP and then transferred to the acceptor end of the tRNA.

**Immunogen:** A synthetic peptide of human MARS

**Applications:** WB,IHC-F,IHC-P,ICC/IF,IP

**Recommended Dilutions:** WB: 1/500-1/1000 IHC: 1/50-1/100 IF: 1/50-1/200 IP: 1/20

**Host Species:** Rabbit

**Clonality:** Rabbit Monoclonal

**Clone ID:** R03-3D4

**MW:** Calculated MW: 101 kDa; Observed MW: 101 kDa

**Isotype:** IgG

**Purification:** Affinity Purified

**Species Reactivity:** Human,Rat

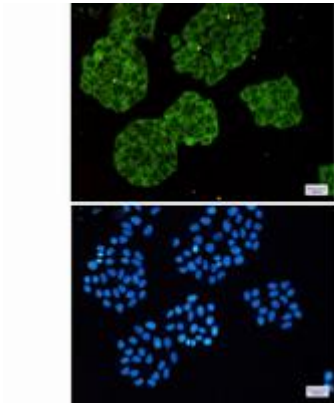
**Conjugation:** Unconjugated

**Modification:** Unmodified

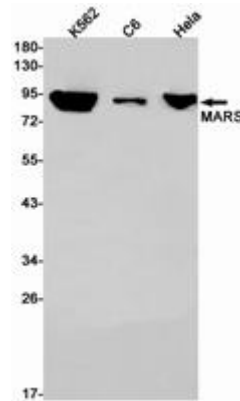
**Constituents:** PBS (without Mg<sup>2+</sup> and Ca<sup>2+</sup>), pH 7.3 containing 50% glycerol, 0.5% BSA and 0.02% sodium azide

**Research Areas:** Signal Transduction

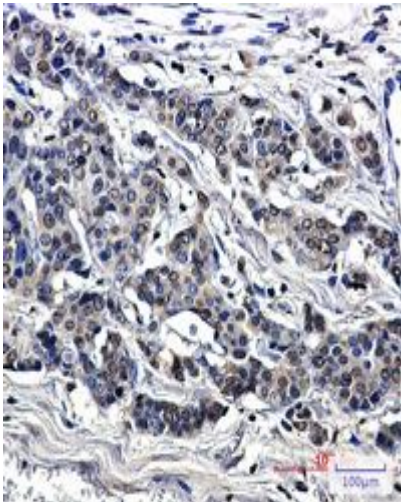
**Storage & Shipping:** Store at -20°C. Avoid repeated freezing and thawing



Immunocytochemistry analysis of MARS (green) in Hela using MARS antibody, and DAPI (blue)



Western blot analysis of MARS in K562, C6, Hela lysates using MetRS antibody.



Immunohistochemistry analysis of paraffin-embedded Human breast cancer using MetRS/MARS antibody. High-pressure and temperature Sodium Citrate pH 6.0 was used for antigen retrieval.