

METTL7A RABBIT PAB

Cat.#: S218207

Product Name: Anti-METTL7A Rabbit Polyclonal Antibody

Synonyms: AAM-B

UNIPROT ID: Q9H8H3 (Gene Accession - BC004492)

Background: METTL7A (methyltransferase like 7A), also known as AAM-B, is a 244 amino acid protein that is thought to function as a methyltransferase and is encoded by a gene which maps to chromosome 12. Encoding over 1,100 genes, chromosome 12 comprises nearly 4.5% of the human genome and is associated with a number of skeletal deformities, including hypochondrogenesis, achondrogenesis and Kniest dysplasia. Chromosome 12 is also home to both a homeobox gene cluster which encodes crucial transcription factors for morphogenesis, and a natural killer complex gene cluster encoding C-type lectin proteins which mediate the NK cell response to MHC I interaction. Additionally, Trisomy 12p (three copies of the p arm of chromosome 12) leads to facial developmental defects, seizure disorders and a host of other symptoms varying in severity depending on the extent of mosaicism.

Immunogen: Fusion protein of human METTL7A

Applications: ELISA, WB, IHC

Recommended Dilutions: IHC: 25-100;WB: 200-1000;ELISA: 5000-10000

Host Species: Rabbit

Clonality: Rabbit Polyclonal

Isotype: Immunogen-specific rabbit IgG

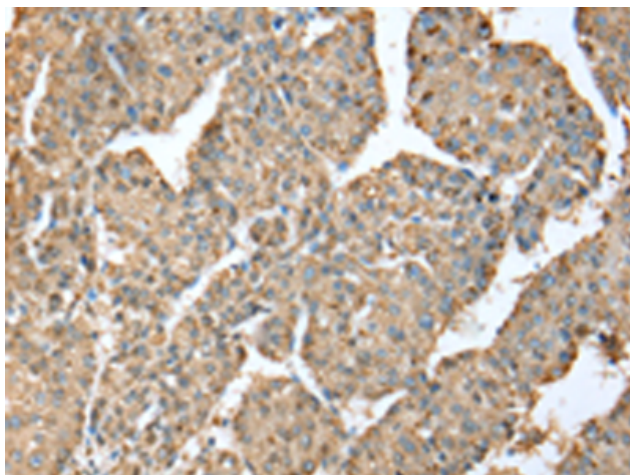
Purification: Antigen affinity purification

Species Reactivity: Human

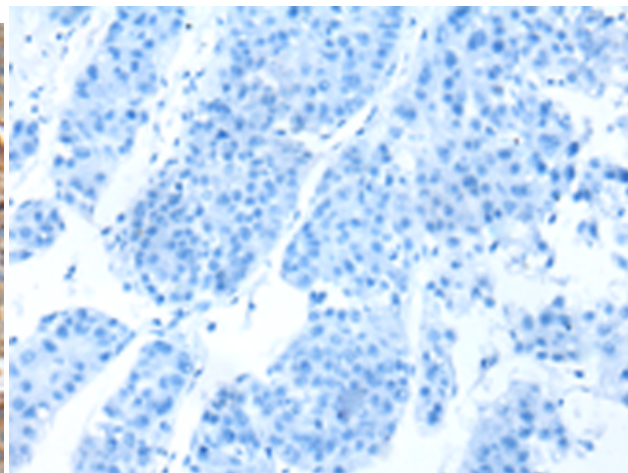
Constituents: PBS (without Mg²⁺ and Ca²⁺), pH 7.4, 150 mM NaCl, 0.05% Sodium Azide and 40% glycerol

Research Areas: Epigenetics and Nuclear Signaling

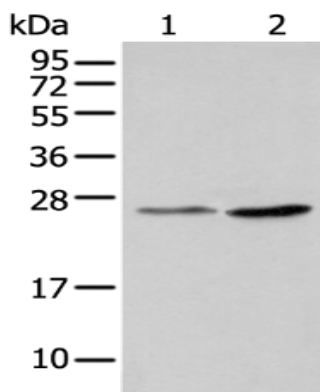
Storage & Shipping: Store at -20°C. Avoid repeated freezing and thawing



Immunohistochemistry analysis of paraffin embedded Human liver cancer tissue using 218207 (METTL7A Antibody) at a dilution of 1/25 (Cytoplasm).



In comparison with the IHC on the left, the same paraffin-embedded Human liver cancer tissue is first treated with the fusion protein and then with 218207 (Anti-METTL7A Antibody) at dilution 1/25.



Gel: 12% SDS-PAGE, Lysate: 40 μ g;
Lane 1-2: 231 cell, Human urinary bladder tissue;
Primary antibody: 218207 (METTL7A Antibody) at dilution 1/400;
Secondary antibody: Goat anti rabbit IgG at 1/8000 dilution;
Exposure time: 1 minute