

## MIA RABBIT PAB

**Cat.#:** N225145

**Product Name:** Anti-MIA Rabbit pAb

**Synonyms:** Melanoma-derived growth regulatory protein (Melanoma inhibitory activity protein)

**UNIPROT ID:** Q16674

**Background:** Elicits growth inhibition on melanoma cells in vitro as well as some other neuroectodermal tumors, including gliomas.

**Immunogen:** Synthetic peptide from human protein at AA range: 90-131

**Applications:** IHC-P, ELISA

**Recommended Dilutions:** IHC: 1/50-1/100 ELISA: 1/10000

**Host Species:** Rabbit

**Clonality:** Rabbit Polyclonal

**Clone ID:** -

**MW:** -

**Isotype:** IgG

**Purification:** Affinity Purified

**Species Reactivity:** Human

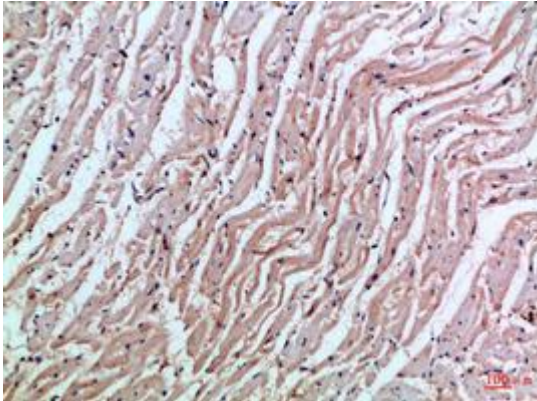
**Conjugation:** Unconjugated

**Modification:** Unmodified

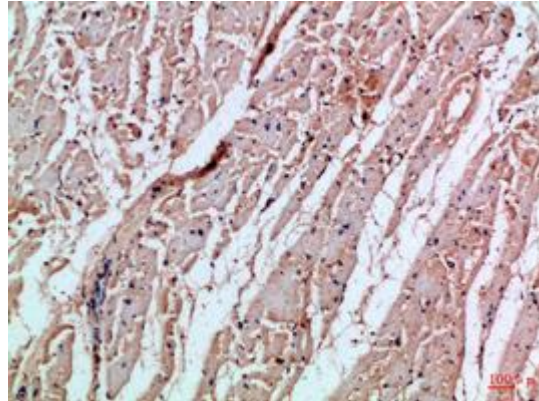
**Constituents:** PBS (without Mg<sup>2+</sup> and Ca<sup>2+</sup>), pH 7.3 containing 50% glycerol, 0.5% BSA and 0.02% sodium azide

**Research Areas:** Signal Transduction

**Storage & Shipping:** Store at -20°C. Avoid repeated freezing and thawing



Immunohistochemical analysis of paraffin-embedded Human tonsils using MIA antibody. High-pressure and temperature Sodium Citrate pH 6.0 was used for antigen retrieval.



Immunohistochemistry analysis of paraffin-embedded Human heart using MIA antibody. High-pressure and temperature Sodium Citrate pH 6.0 was used for antigen retrieval.