

MIDKINE RABBIT PAB

Cat.#: N225653

Product Name: Anti-Midkine Rabbit pAb

Synonyms: MDK; FLJ27379; MK1; NEGF2; Midkine; NEGF2; ARAP

UNIPROT ID: P21741

Background: Midkine, or MK, is a heparin-binding molecule involved in the regulation of growth and differentiation during embryogenesis. MK expression is tightly regulated during embryonic development by steroid receptors of the retinoic acid superfamily. The mature human MK protein is 118 amino acids in length and contains five intrachain disulfide bonds. MK is a non-glycosylated protein that shows greater than 87% identity between human and mouse.

Immunogen: A synthesized peptide derived from human Midkine

Applications: WB,IHC-P,ICC/IF,IP

Recommended Dilutions: WB: 1/500-1/1000 IHC: 1/50-1/100 IF: 1/50-1/200 IP: 1/20

Host Species: Rabbit

Clonality: Rabbit Polyclonal

Clone ID: -

MW: Calculated MW: 16 kDa; Observed MW: 16 kDa

Isotype: IgG

Purification: Affinity Chromatography

Species Reactivity: Human

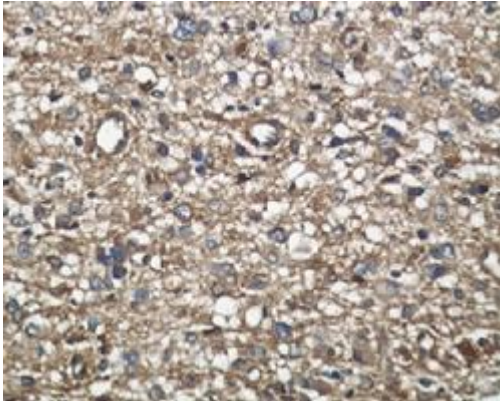
Conjugation: Unconjugated

Modification: Unmodified

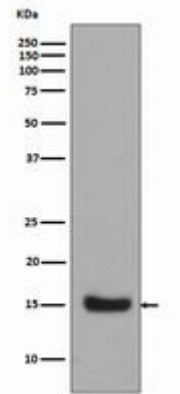
Constituents: PBS (without Mg²⁺ and Ca²⁺), pH 7.3 containing 50% glycerol, 0.5% BSA and 0.02% sodium azide

Research Areas: Neuroscience

Storage & Shipping: Store at -20°C. Avoid repeated freezing and thawing



Immunohistochemistry analysis of paraffin-embedded Human liver carcinoma using Midkine antibody. High-pressure and temperature Sodium Citrate pH 6.0 was used for antigen retrieval.



Western blot analysis of Midkine in Midkine Recombinant protein using Midkine antibody.