

MIF4GD RABBIT PAB

Cat.#: S218217

Product Name: Anti-MIF4GD Rabbit Polyclonal Antibody

Synonyms: MIFD; AD023; SLI1

UNIPROT ID: A9UHW6 (Gene Accession - BC033759)

Background: This gene encodes a protein which interacts with the N-terminus of the stem-loop binding protein (SLBP) and the 3' end of histone mRNA. This interaction facilitates the activation of histone mRNA translation. Alternative splicing results in multiple transcript variants encoding different isoforms.

Immunogen: Fusion protein of human MIF4GD

Applications: ELISA, WB, IHC

Recommended Dilutions: IHC: 50-200;WB: 500-2000;ELISA: 5000-10000

Host Species: Rabbit

Clonality: Rabbit Polyclonal

Isotype: Immunogen-specific rabbit IgG

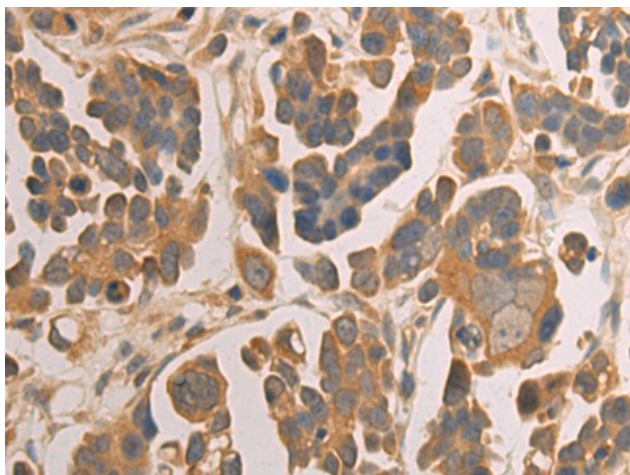
Purification: Antigen affinity purification

Species Reactivity: Human

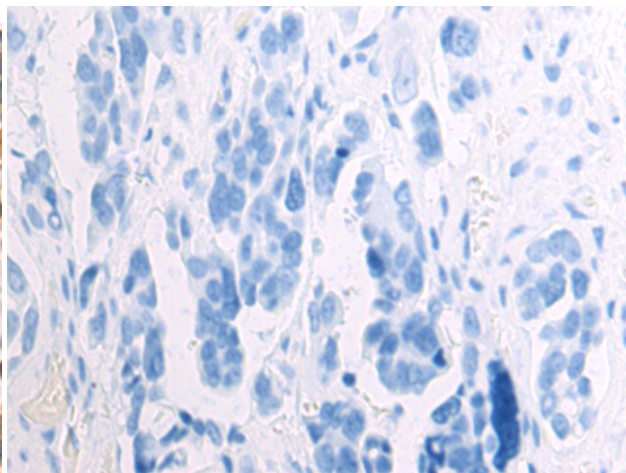
Constituents: PBS (without Mg²⁺ and Ca²⁺), pH 7.4, 150 mM NaCl, 0.05% Sodium Azide and 40% glycerol

Research Areas: Cell Biology

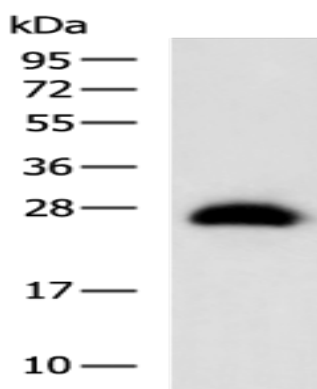
Storage & Shipping: Store at -20°C. Avoid repeated freezing and thawing



Immunohistochemistry analysis of paraffin embedded Human colorectal cancer tissue using 218217 (MIF4GD Antibody) at a dilution of 1/70 (Cytoplasm).



In comparison with the IHC on the left, the same paraffin-embedded Human colorectal cancer tissue is first treated with the fusion protein and then with 218217 (Anti-MIF4GD Antibody) at dilution 1/70.



Gel: 12% SDS-PAGE, Lysate: 40 μ g;
Lane: 293T cell lysate;
Primary antibody: 218217 (MIF4GD Antibody) at dilution 1/550;
Secondary antibody: HRP-conjugated Goat anti rabbit IgG at 1/5000 dilution;
Exposure time: 2 seconds