

## MIIP RABBIT PAB

**Cat.#:** S221828

**Product Name:** Anti-MIIP Rabbit Polyclonal Antibody

**Synonyms:** IIP45

**UNIPROT ID:** Q5JXC2 (Gene Accession - NP\_068752 )

**Background:** This gene encodes a protein that interacts with the oncogene protein insulin-like growth factor binding protein 2 and may function as an inhibitor of cell migration and invasion. This protein also interacts with the cell division protein 20 and may be involved in regulating mitotic progression. This protein may function as a tumor suppressor by inhibiting the growth of certain cancers.

**Immunogen:** Synthetic peptide of human MIIP

**Applications:** ELISA, IHC

**Recommended Dilutions:** IHC: 30-150; ELISA: 5000-10000

**Host Species:** Rabbit

**Clonality:** Rabbit Polyclonal

**Isotype:** Immunogen-specific rabbit IgG

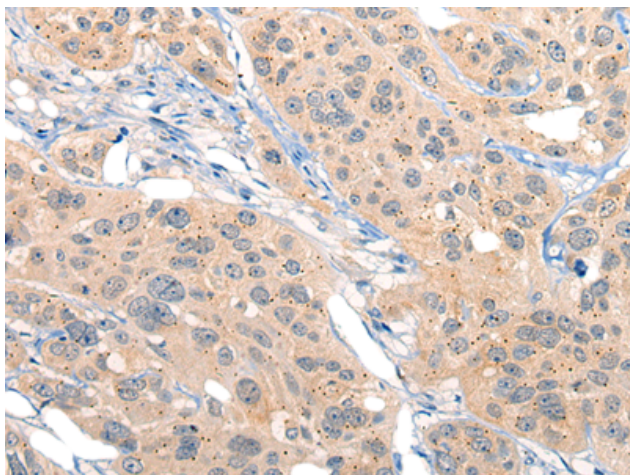
**Purification:** Antigen affinity purification

**Species Reactivity:** Human

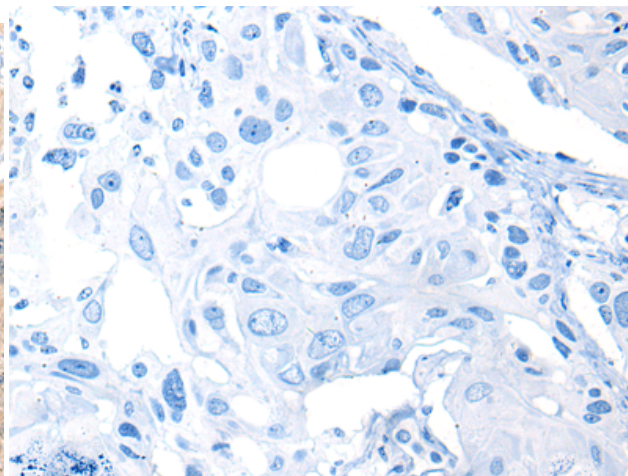
**Constituents:** PBS (without Mg<sup>2+</sup> and Ca<sup>2+</sup>), pH 7.4, 150 mM NaCl, 0.05% Sodium Azide and 40% glycerol

**Research Areas:** Signal Transduction, Neuroscience

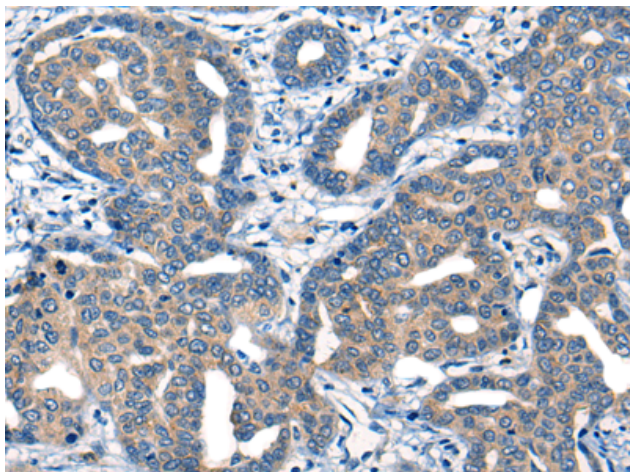
**Storage & Shipping:** Store at -20°C. Avoid repeated freezing and thawing



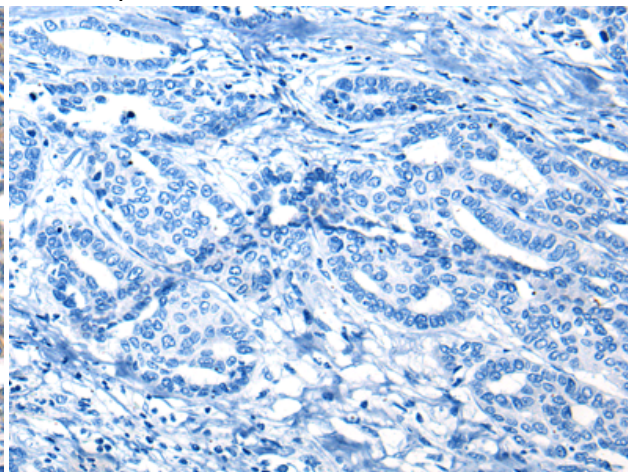
Immunohistochemistry analysis of paraffin embedded Human esophagus cancer tissue using 221828 (MIIP Antibody) at a dilution of 1/45 (Cytoplasm and Cell membrane).



In comparison with the IHC on the left, the same paraffin-embedded Human esophagus cancer tissue is first treated with the synthetic peptide and then with 221828 (Anti-MIIP Antibody) at dilution 1/45.



The image on the left is immunohistochemistry of paraffin-embedded Human liver cancer tissue using 221828 (Anti-MIIP Antibody) at a dilution of 1/45.



In comparison with the IHC on the left, the same paraffin-embedded Human liver cancer tissue is first treated with synthetic peptide and then with D263590 (Anti-MIIP Antibody) at dilution 1/45.