

MITOCHONDRIAL FISSION 1 PROTEIN RABBIT MAB

Cat.#: N263034

Product Name: Anti-Mitochondrial Fission 1 Protein Rabbit Monoclonal Antibody

Synonyms: CGI135; FIS1; hFis1; TTC 11

UNIPROT ID: Q9Y3D6

Background: Promotes the fragmentation of the mitochondrial network and its perinuclear clustering. Can induce cytochrome c release from the mitochondrion to the cytosol, ultimately leading to apoptosis. Also mediates peroxisomal fission.

Immunogen: A synthetic peptide of human TTC11

Applications: WB,IHC-F,IHC-P,ICC/IF

Recommended Dilutions: WB: 1/500-1/1000 IHC: 1/50-1/100 IF: 1/50-1/200

Host Species: Rabbit

Clonality: Rabbit Monoclonal

Clone ID: R02-8G8

MW: Calculated MW: 17 kDa; Observed MW: 17 kDa

Isotype: IgG

Purification: Affinity Purified

Species Reactivity: Human

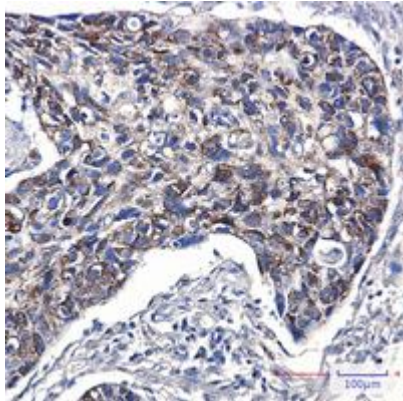
Conjugation: Unconjugated

Modification: Unmodified

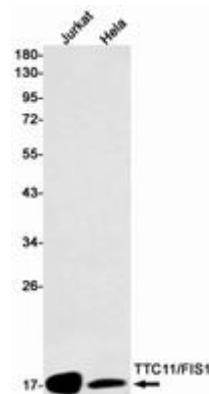
Constituents: PBS (without Mg²⁺ and Ca²⁺), pH 7.3 containing 50% glycerol, 0.5% BSA and 0.02% sodium azide

Research Areas: Cell Biology

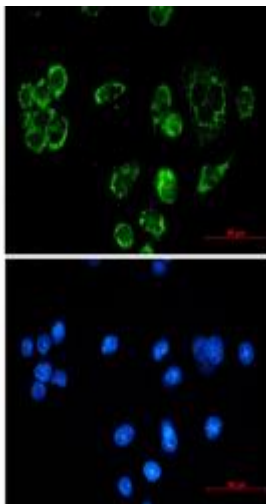
Storage & Shipping: Store at -20°C. Avoid repeated freezing and thawing



Immunohistochemistry analysis of paraffin-embedded Human lung cancer using TTC11 antibody. High-pressure and temperature Sodium Citrate pH 6.0 was used for antigen retrieval.



Western blot analysis of TTC11/FIS1 in Jurkat, Hela lysates using Sodium Mitochondrial Fission 1 Protein antibody.



Immunocytochemistry analysis of TTC11/FIS1 (green) in MCF-7 using TTC11/FIS1 antibody, and DAPI (blue)