

## MITOFUSIN 1 RABBIT MAB

**Cat.#:** N263426

**Product Name:** Anti-Mitofusin 1 Rabbit Monoclonal Antibody

**Synonyms:** HR2; mKIAA4032; D3ErtD265e; 2310002F04Rik; 6330416C07Rik

**UNIPROT ID:** Q8R4Z9

**Background:** Mitochondrial outer membrane GTPase that mediates mitochondrial clustering and fusion.

**Immunogen:** A synthetic peptide of rat Mitofusin 1

**Applications:** WB,IP

**Recommended Dilutions:** WB: 1/500-1/1000 IP: 1/20

**Host Species:** Rabbit

**Clonality:** Rabbit Monoclonal

**Clone ID:** R05-3A8

**MW:** Calculated MW: 84 kDa; Observed MW: 84 kDa

**Isotype:** IgG

**Purification:** Affinity Purified

**Species Reactivity:** Mouse,Rat,Hamster

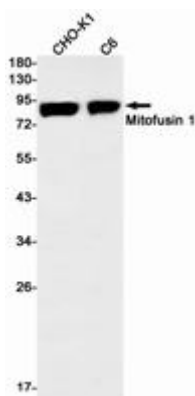
**Conjugation:** Unconjugated

**Modification:** Unmodified

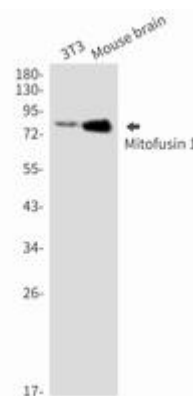
**Constituents:** PBS (without Mg<sup>2+</sup> and Ca<sup>2+</sup>), pH 7.3 containing 50% glycerol, 0.5% BSA and 0.02% sodium azide

**Research Areas:** Neuroscience

**Storage & Shipping:** Store at -20°C. Avoid repeated freezing and thawing



Western blot analysis of Mitofusin 1 in CHO-K1, C6 lysates using Mitofusin 1 antibody.



Western blot analysis of Mitofusin 1 in 3T3, mouse brain lysates using Mitofusin 1 antibody.



# Product Description

Pioneering GTPase and Oncogene Product Development since 2010

---