

MITOFUSIN 2 RABBIT PAB

Cat.#: N225370

Product Name: Anti-Mitofusin 2 Rabbit pAb

Synonyms: HSG; MARF; CMT2A; CPRP1; CMT2A2; HMSN6A; CMT2A2A; CMT2A2B

UNIPROT ID: O95140

Background: Plays an important role in the regulation of vascular smooth muscle cell proliferation. Involved in the clearance of damaged mitochondria via selective autophagy (mitophagy). Is required for PARK2 recruitment to dysfunctional mitochondria.

Immunogen: The antiserum was produced against synthesized peptide derived from human Mfn2. AA range:354-403

Applications: WB,IHC-P,ELISA

Recommended Dilutions: WB: 1/500-1/1000 IHC: 1/50-1/100 ELISA: 1/10000

Host Species: Rabbit

Clonality: Rabbit Polyclonal

Clone ID: -

MW: Calculated MW: 86 kDa; Observed MW: 86 kDa

Isotype: IgG

Purification: Affinity Chromatography

Species Reactivity: Human,Mouse,Rat

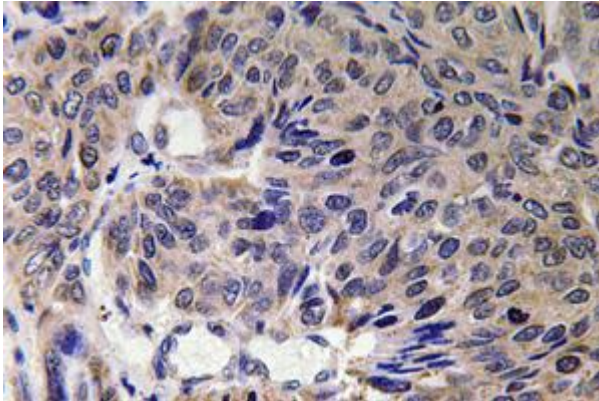
Conjugation: Unconjugated

Modification: Unmodified

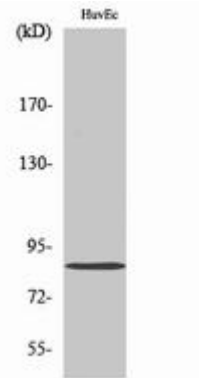
Constituents: PBS (without Mg²⁺ and Ca²⁺), pH 7.3 containing 50% glycerol, 0.5% BSA and 0.02% sodium azide

Research Areas: Tags & Cell Markers

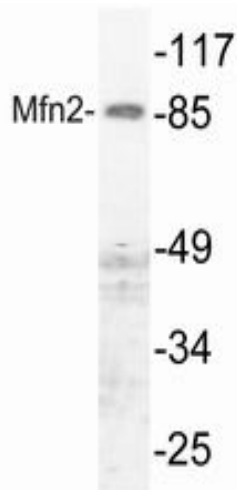
Storage & Shipping: Store at -20°C. Avoid repeated freezing and thawing



Immunohistochemistry analysis of paraffin-embedded Human lung carcinoma tissue using Mitofusin 2 antibody. High-pressure and temperature Sodium Citrate pH 6.0 was used for antigen retrieval.



Western blot analysis of Mitofusin 2 in various lysates using Mitofusin 2 antibody.



Western blot analysis of Mitofusin 2 in HUVEC lysates using Mfn2 antibody.