

## MLH1 RABBIT MAB

**Cat.#:** N263429

**Product Name:** Anti-MLH1 Rabbit Monoclonal Antibody

**Synonyms:** MLH1; COCA2; DNA mismatch repair protein Mlh1; MutL protein homolog 1

**UNIPROT ID:** P40692

**Background:** This gene was identified as a locus frequently mutated in hereditary nonpolyposis colon cancer (HNPCC). It is a human homolog of the E. coli DNA mismatch repair gene mutL, consistent with the characteristic alterations in microsatellite sequences (RER+ phenotype) found in HNPCC. Alternatively spliced transcript variants encoding different isoforms have been described, but their full-length natures have not been determined.

**Immunogen:** Recombinant protein of human MLH1

**Applications:** WB, ICC/IF

**Recommended Dilutions:** WB: 1/500-1/1000 IF: 1/50-1/200

**Host Species:** Rabbit

**Clonality:** Rabbit Monoclonal

**Clone ID:** R07-5D3

**MW:** Calculated MW: 85 kDa; Observed MW: 85 kDa

**Isotype:** IgG

**Purification:** Affinity Purified

**Species Reactivity:** Human

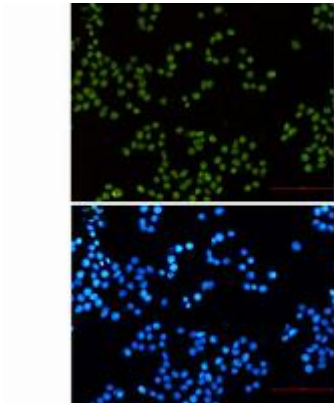
**Conjugation:** Unconjugated

**Modification:** Unmodified

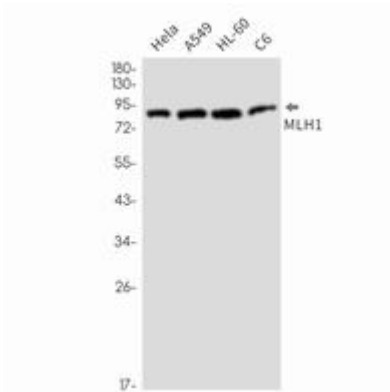
**Constituents:** PBS (without Mg<sup>2+</sup> and Ca<sup>2+</sup>), pH 7.3 containing 50% glycerol, 0.5% BSA and 0.02% sodium azide

**Research Areas:** Epigenetics and Nuclear Signaling

**Storage & Shipping:** Store at -20°C. Avoid repeated freezing and thawing



Immunocytochemistry analysis of MLH1 (green) in hela using MLH1 antibody, and DAPI (blue)



Western blot analysis of MLH1 in HeLa, A549, HL-60, U2OS lysates using MLH1 antibody.