

MLH1 RABBIT MAB

Cat.#: N261637

Product Name: Anti-MLH1 Rabbit Monoclonal Antibody

Synonyms: MLH1; COCA2; DNA mismatch repair protein Mlh1; MutL protein homolog 1

UNIPROT ID: P40692

Background: This gene was identified as a locus frequently mutated in hereditary nonpolyposis colon cancer (HNPCC). It is a human homolog of the E. coli DNA mismatch repair gene mutL, consistent with the characteristic alterations in microsatellite sequences (RER+ phenotype) found in HNPCC. Alternatively spliced transcript variants encoding different isoforms have been described, but their full-length natures have not been determined.

Immunogen: A synthetic peptide of human MLH1

Applications: WB, ICC/IF, IP

Recommended Dilutions: WB: 1/500-1/1000 IF: 1/50-1/200 IP: 1/20

Host Species: Rabbit

Clonality: Rabbit Monoclonal

Clone ID: R02-2E8

MW: Calculated MW: 85 kDa; Observed MW: 85 kDa

Isotype: IgG

Purification: Affinity Purified

Species Reactivity: Human, Mouse, Rat

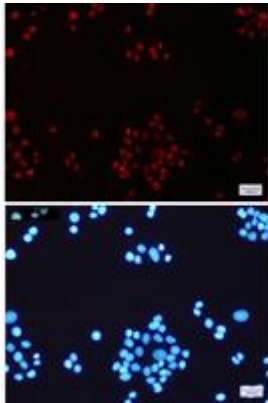
Conjugation: Unconjugated

Modification: Unmodified

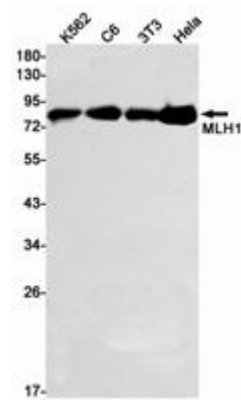
Constituents: PBS (without Mg²⁺ and Ca²⁺), pH 7.3 containing 50% glycerol, 0.5% BSA and 0.02% sodium azide

Research Areas: Epigenetics and Nuclear Signaling

Storage & Shipping: Store at -20°C. Avoid repeated freezing and thawing



Immunocytochemistry analysis of MLH1 (green) in HeLa using MLH1 antibody, and DAPI (blue)



Western blot analysis of MLH1 in K562, C6, 3T3, HeLa lysates using MLH1 antibody.