

## MLKL (5E3) MOUSE MAB

**Cat.#:** N261338

**Product Name:** Anti-MLKL (5E3) Mouse Monoclonal Antibody

**Synonyms:** MLKL

**UNIPROT ID:** Q8NB16

**Background:** Pseudokinase that plays a key role in TNF-induced necroptosis, a programmed cell death process. Activated following phosphorylation by RIPK3, leading to homotrimerization, localization to the plasma membrane and execution of programmed necrosis characterized by calcium influx and plasma membrane damage. Does not have protein kinase activity.

**Immunogen:** Synthetic peptide conjugated to KLH.

**Applications:** IHC-P

**Recommended Dilutions:** IHC: 1/50-1/100

**Host Species:** Mouse

**Clonality:** Mouse Monoclonal

**Clone ID:** 5E3-6B4-7G9

**MW:** -

**Isotype:** IgG1

**Purification:** Affinity Purified

**Species Reactivity:** Human

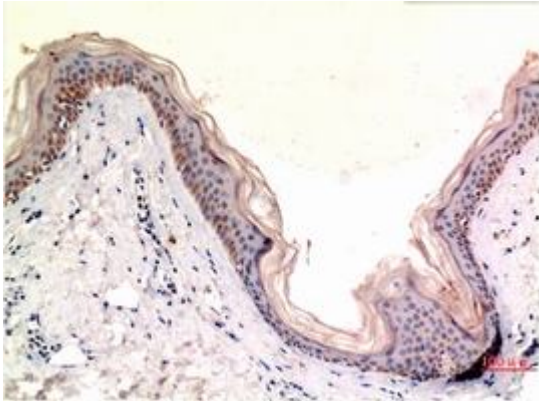
**Conjugation:** Unconjugated

**Modification:** Unmodified

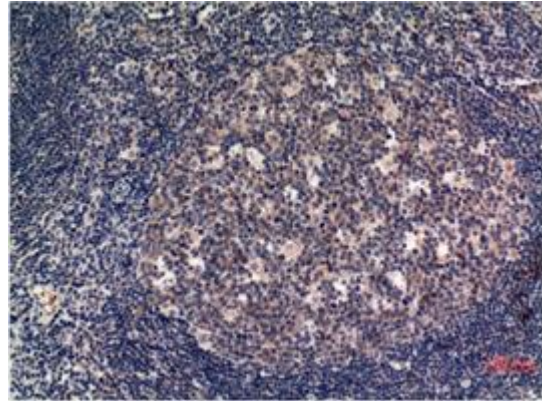
**Constituents:** PBS (without Mg<sup>2+</sup> and Ca<sup>2+</sup>), pH 7.3 containing 50% glycerol, 0.5% BSA and 0.02% sodium azide

**Research Areas:** Signal Transduction

**Storage & Shipping:** Store at -20°C. Avoid repeated freezing and thawing



Immunohistochemical analysis of paraffin-embedded Human tonsils using MLKL (5E3) antibody. High-pressure and temperature Sodium Citrate pH 6.0 was used for antigen retrieval.



Immunohistochemistry analysis of paraffin-embedded Human Tonsil Tissue using MLKL (5E3) antibody. High-pressure and temperature Sodium Citrate pH 6.0 was used for antigen retrieval.