

MMP23B RABBIT PAB

Cat.#: S220718

Product Name: Anti-MMP23B Rabbit Polyclonal Antibody

Synonyms: MIFR; MMP22; MIFR-1; MMP23A

UNIPROT ID: O75900 (Gene Accession - NP_008914)

Background: This gene (MMP23B) encodes a member of the matrix metalloproteinase (MMP) family, and it is part of a duplicated region of chromosome 1p36.3. Proteins of the matrix metalloproteinase (MMP) family are involved in the breakdown of extracellular matrix in normal physiological processes, such as embryonic development, reproduction, and tissue remodeling, as well as in disease processes, such as arthritis and metastasis. This gene belongs to the more telomeric copy of the duplicated region.

Immunogen: Synthetic peptide of human MMP23B

Applications: ELISA, WB, IHC

Recommended Dilutions: IHC: 25-100;WB: 500-2000;ELISA: 1000-2000

Host Species: Rabbit

Clonality: Rabbit Polyclonal

Isotype: Immunogen-specific rabbit IgG

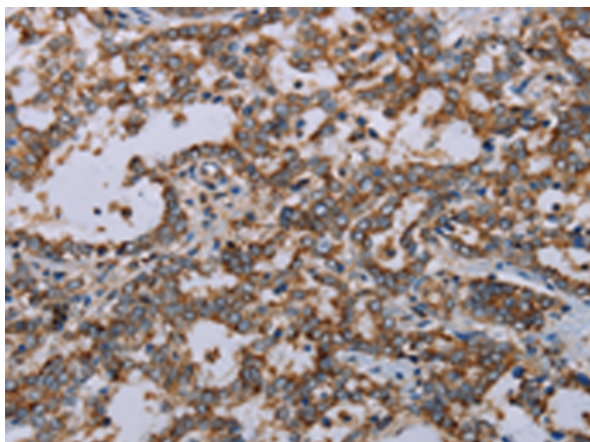
Purification: Antigen affinity purification

Species Reactivity: Human

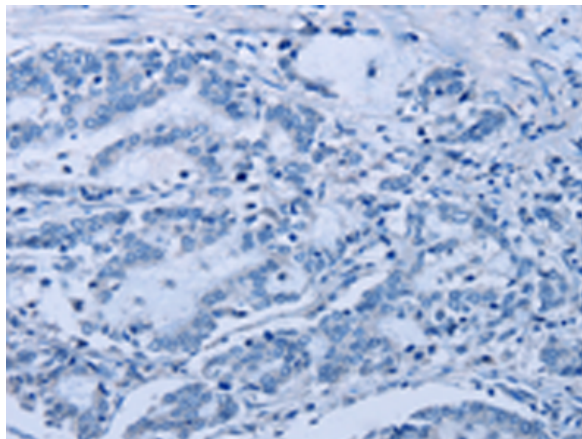
Constituents: PBS (without Mg²⁺ and Ca²⁺), pH 7.4, 150 mM NaCl, 0.05% Sodium Azide and 40% glycerol

Research Areas: Signal Transduction, Cell Biology

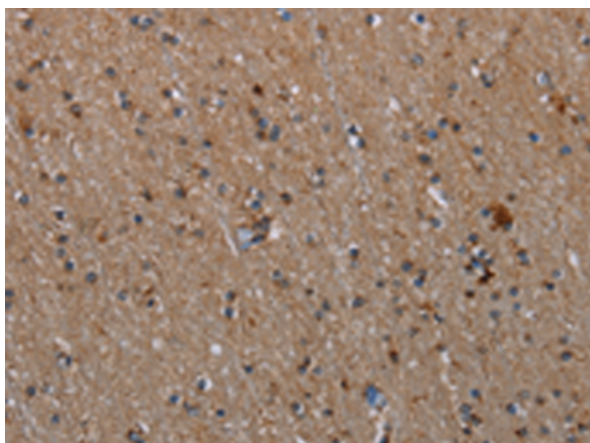
Storage & Shipping: Store at -20°C. Avoid repeated freezing and thawing



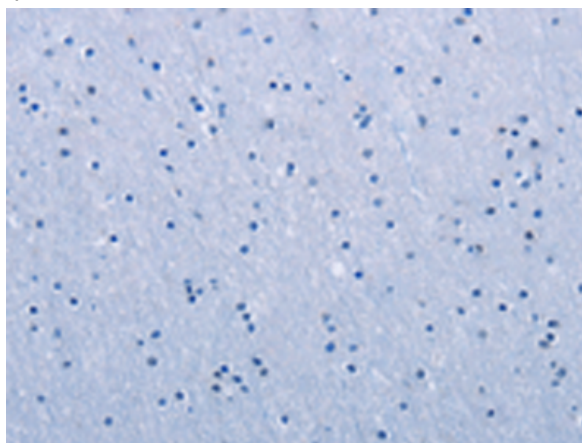
Immunohistochemistry analysis of paraffin embedded Human liver cancer tissue using 220718(MMP23B Antibody) at a dilution of 1/20(Cytoplasm).



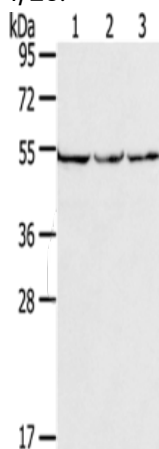
In comparison with the IHC on the left, the same paraffin-embedded Human liver cancer tissue is first treated with the synthetic peptide and then with 220718(Anti-MMP23B Antibody) at dilution 1/20.



The image on the left is immunohistochemistry of paraffin-embedded Human brain tissue using 220718(Anti-MMP23B Antibody) at a dilution of 1/20.



In comparison with the IHC on the left, the same paraffin-embedded Human brain tissue is first treated with synthetic peptide and then with D261916(Anti-MMP23B Antibody) at dilution 1/20.



Gel: 8%SDS-PAGE, Lysate: 40 µg;
Lane 1-3: PC3 cells, hela cells, A549 cells;
Primary antibody: 220718(MMP23B Antibody) at dilution 1/200;
Secondary antibody: Goat anti rabbit IgG at 1/8000 dilution;
Exposure time: 10 seconds



Product Description

Pioneering GTPase and Oncogene Product Development since 2010
