

MMP26 RABBIT PAB

Cat.#: S219924

Product Name: Anti-MMP26 Rabbit Polyclonal Antibody

Synonyms:

UNIPROT ID: Q9NRE1 (Gene Accession - NP_068573)

Background: Proteins of the matrix metalloproteinase (MMP) family are involved in the breakdown of extracellular matrix in normal physiological processes, such as embryonic development, reproduction, and tissue remodeling, as well as in disease processes, such as arthritis and metastasis. The encoded preproprotein is proteolytically processed to generate the mature enzyme. This enzyme may degrade collagen type IV, fibronectin, fibrinogen, and beta-casein, and activate matrix metalloproteinase-9 by cleavage. The protein differs from most MMP family members in that it lacks a conserved C-terminal protein domain. The encoded protein may promote cell invasion in multiple human cancers.

Immunogen: Synthetic peptide of human MMP26

Applications: ELISA, IHC

Recommended Dilutions: IHC: 25-100; ELISA: 5000-10000

Host Species: Rabbit

Clonality: Rabbit Polyclonal

Isotype: Immunogen-specific rabbit IgG

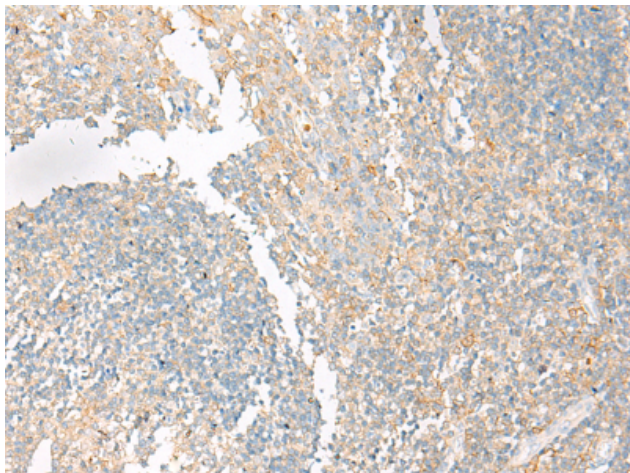
Purification: Antigen affinity purification

Species Reactivity: Human

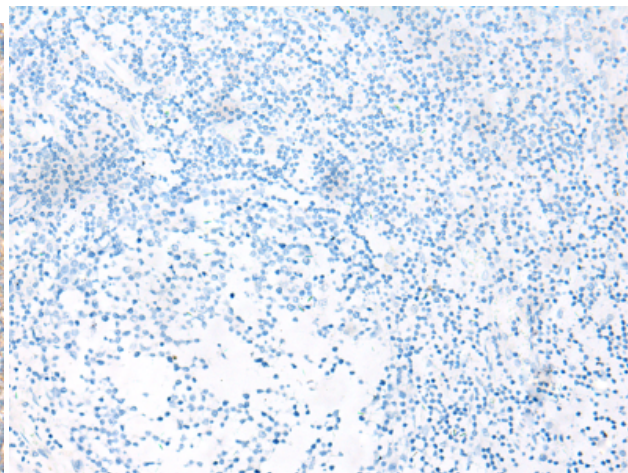
Constituents: PBS (without Mg²⁺ and Ca²⁺), pH 7.4, 150 mM NaCl, 0.05% Sodium Azide and 40% glycerol

Research Areas: Signal Transduction, Cell Biology

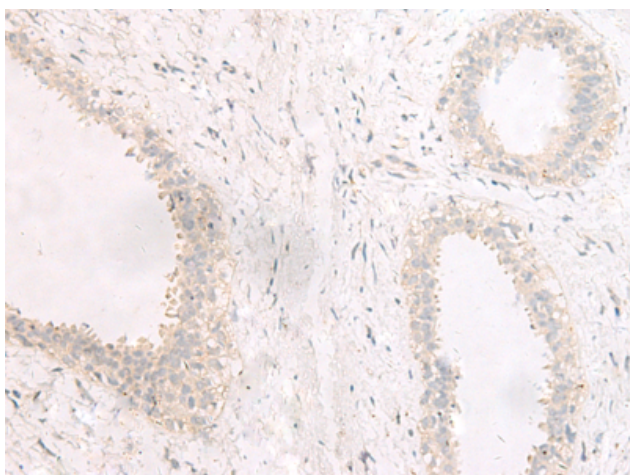
Storage & Shipping: Store at -20°C. Avoid repeated freezing and thawing



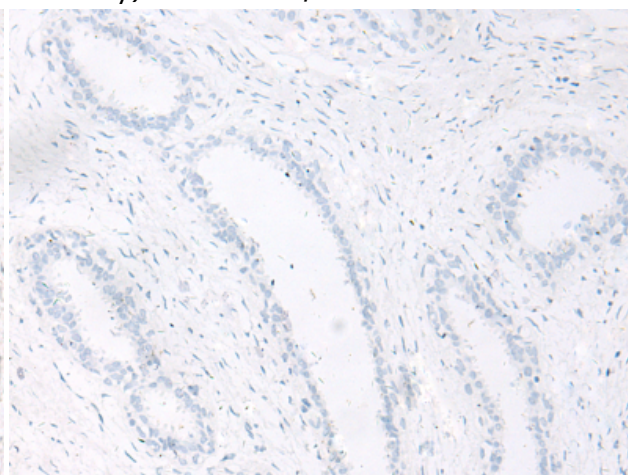
Immunohistochemistry analysis of paraffin embedded Human tonsil tissue using 219924(MMP26 Antibody) at a dilution of 1/40(Secreted).



In comparison with the IHC on the left, the same paraffin-embedded Human tonsil tissue is first treated with the synthetic peptide and then with 219924(Anti-MMP26 Antibody) at dilution 1/40.



The image on the left is immunohistochemistry of paraffin-embedded Human breast cancer tissue using 219924(Anti-MMP26 Antibody) at a dilution of 1/40.



In comparison with the IHC on the left, the same paraffin-embedded Human breast cancer tissue is first treated with synthetic peptide and then with D260631(Anti-MMP26 Antibody) at dilution 1/40.