

MMP3 RABBIT PAB

Cat.#: S216267

Product Name: Anti-MMP3 Rabbit Polyclonal Antibody

Synonyms: SL-1, STMY, STR1, CHDS6, MMP-3, STMY1

UNIPROT ID: P08254 (Gene Accession - BC069676)

Background: Proteins of the matrix metalloproteinase (MMP) family are involved in the breakdown of extracellular matrix in normal physiological processes, such as embryonic development, reproduction, and tissue remodeling, as well as in disease processes, such as arthritis and metastasis. Most MMP's are secreted as inactive proproteins which are activated when cleaved by extracellular proteinases. This gene encodes an enzyme which degrades fibronectin, laminin, collagens III, IV, I,x and ,x and cartilage proteoglycans. The enzyme is thought to be involved in wound repair, progression of atherosclerosis, and tumor initiation. The gene is part of a cluster of MMP genes which localize to chromosome 11q22.3.

Immunogen: Fusion protein of human MMP3

Applications: ELISA, IHC

Recommended Dilutions: IHC: 25-100; ELISA: 500-5000

Host Species: Rabbit

Clonality: Rabbit Polyclonal

Isotype: Immunogen-specific rabbit IgG

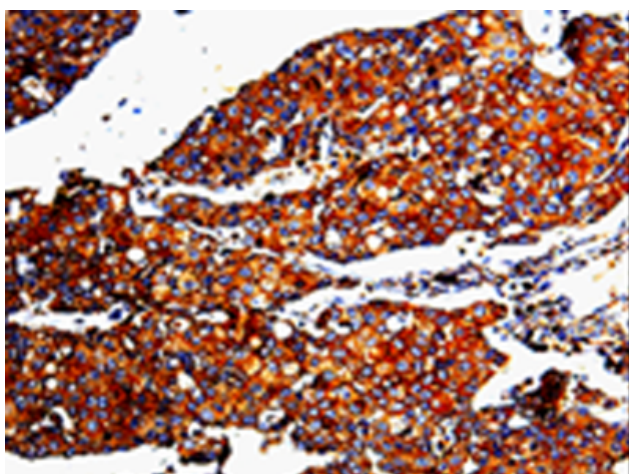
Purification: Antigen affinity purification

Species Reactivity: Human

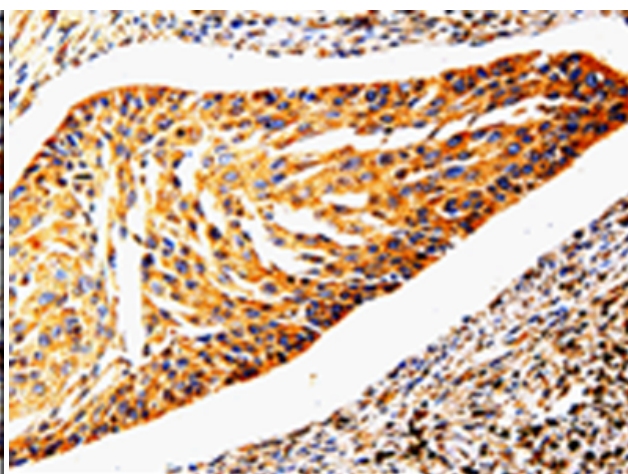
Constituents: PBS (without Mg²⁺ and Ca²⁺), pH 7.4, 150 mM NaCl, 0.05% Sodium Azide and 40% glycerol

Research Areas: Signal Transduction, Cardiovascular, Cancer, Cell Biology

Storage & Shipping: Store at -20°C. Avoid repeated freezing and thawing



Immunohistochemistry analysis of paraffin-embedded Human breast cancer tissue using 216267(MMP3 Antibody) at a dilution of 1/10(Cytoplasm).



Immunohistochemistry analysis of paraffin-embedded Human cervical cancer tissue using 216267(Anti-MMP3 Antibody) at a dilution of 1/10.