

## MMP9 RABBIT PAB

**Cat.#:** S214554

**Product Name:** Anti-MMP9 Rabbit Polyclonal Antibody

**Synonyms:** GELB; CLG4B; MMP-9; MANDP2

**UNIPROT ID:** P14780 (Gene Accession - NP\_004985 )

**Background:** Proteins of the matrix metalloproteinase (MMP) family are involved in the breakdown of extracellular matrix in normal physiological processes, such as embryonic development, reproduction, and tissue remodeling, as well as in disease processes, such as arthritis and metastasis. Most MMP's are secreted as inactive proproteins which are activated when cleaved by extracellular proteinases. The enzyme encoded by this gene degrades type IV and V collagens. Studies in rhesus monkeys suggest that the enzyme is involved in IL-8-induced mobilization of hematopoietic progenitor cells from bone marrow, and murine studies suggest a role in tumor-associated tissue remodeling.

**Immunogen:** Synthetic peptide of human MMP9

**Applications:** ELISA, IHC

**Recommended Dilutions:** IHC: 50-200; ELISA: 5000-10000

**Host Species:** Rabbit

**Clonality:** Rabbit Polyclonal

**Isotype:** Immunogen-specific rabbit IgG

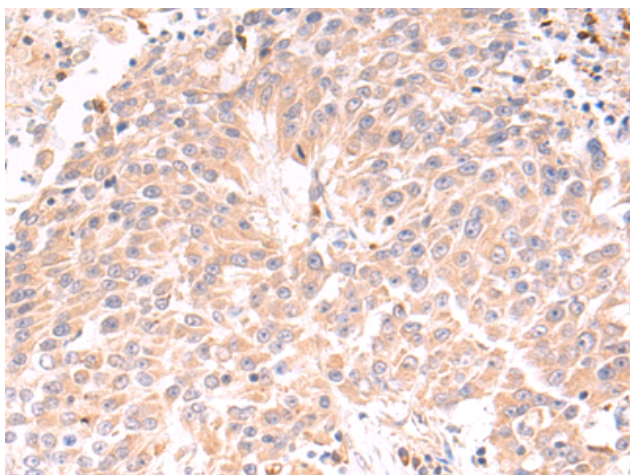
**Purification:** Antigen affinity purification

**Species Reactivity:** Human, Mouse, Rat

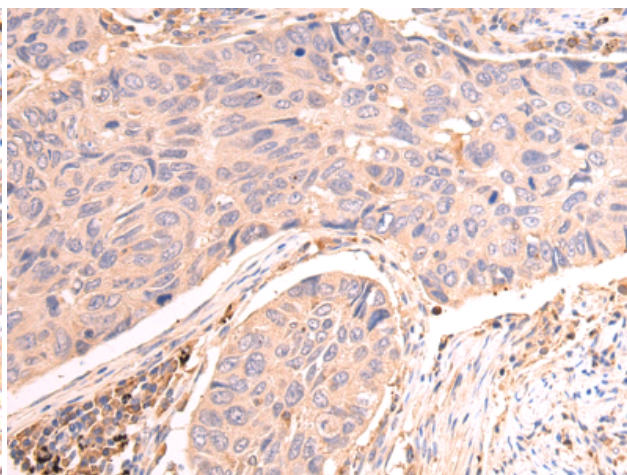
**Constituents:** PBS (without Mg<sup>2+</sup> and Ca<sup>2+</sup>), pH 7.4, 150 mM NaCl, 0.05% Sodium Azide and 40% glycerol

**Research Areas:** Signal Transduction, Cardiovascular, Cancer, Cell Biology

**Storage & Shipping:** Store at -20°C. Avoid repeated freezing and thawing



Immunohistochemistry analysis of paraffin-embedded Human liver cancer tissue using 214554(MMP9 Antibody) at a dilution of 1/40(Cytoplasm).



Immunohistochemistry analysis of paraffin-embedded Human lung cancer tissue using 214554(Anti-MMP9 Antibody) at a dilution of 1/40.