

MOESIN RABBIT MAB

Cat.#: N263431

Product Name: Anti-Moesin Rabbit Monoclonal Antibody

Synonyms: MSN; Moesin; Membrane-organizing extension spike protein; RDX; Radixin; EZR; VIL2; Ezrin; Cytovillin; Villin-2; p81

UNIPROT ID: P26038

Background: The ezrin, radixin, and moesin (ERM) proteins function as linkers between the plasma membrane and the actin cytoskeleton and are involved in cell adhesion, membrane ruffling, and microvilli formation. ERM proteins undergo intra or intermolecular interaction between their amino- and carboxy-terminal domains, existing as inactive cytosolic monomers or dimers.

Immunogen: A synthetic peptide of human Moesin

Applications: WB,IHC-F,IHC-P,ICC/IF,IP

Recommended Dilutions: WB: 1/500-1/1000 IHC: 1/50-1/100 IF: 1/50-1/200 IP: 1/20

Host Species: Rabbit

Clonality: Rabbit Monoclonal

Clone ID: R08-3G5

MW: Calculated MW: 68 kDa; Observed MW: 68 kDa

Isotype: IgG

Purification: Affinity Purified

Species Reactivity: Human,Mouse,Rat

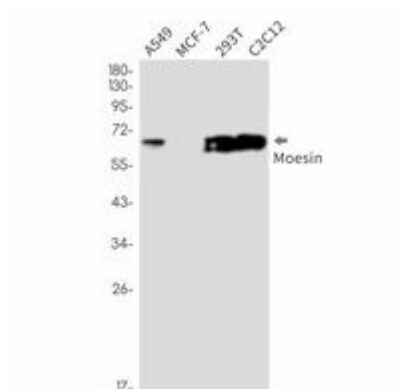
Conjugation: Unconjugated

Modification: Unmodified

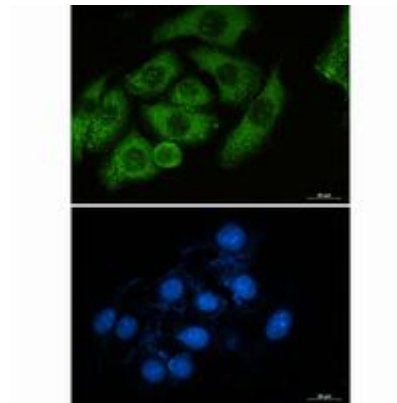
Constituents: PBS (without Mg²⁺ and Ca²⁺), pH 7.3 containing 50% glycerol, 0.5% BSA and 0.02% sodium azide

Research Areas: Signal Transduction

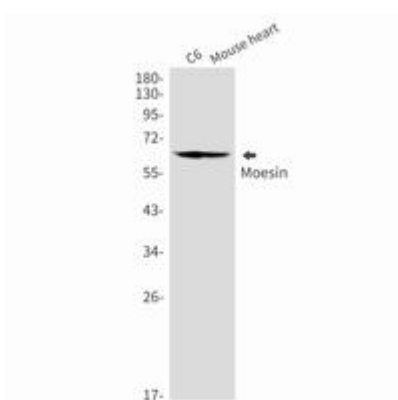
Storage & Shipping: Store at -20°C. Avoid repeated freezing and thawing



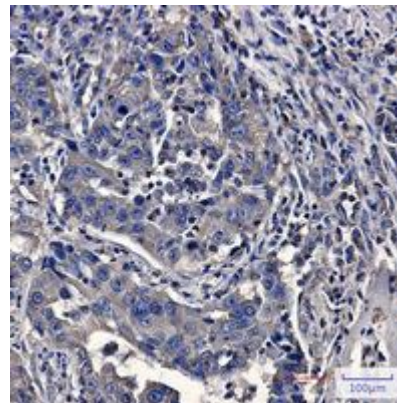
Western blot analysis of Moesin in A549, MCF-7, 293T, C2C12 lysates using Moesin antibody



Immunocytochemistry analysis of Moesin (green) in A549 using Moesin antibody, and DAPI (blue).



Western blot analysis of Moesin in C6, mouse heart lysates using Moesin antibody.



Immunohistochemistry analysis of paraffin-embedded Human lung cancer using Moesin antibody. High-pressure and temperature Sodium Citrate pH 6.0 was used for antigen retrieval.