

MOG RABBIT MAB

Cat.#: N262560

Product Name: Anti-MOG Rabbit Monoclonal Antibody

Synonyms: BTN6; BTNL1; MOGIG2; NRCLP7

UNIPROT ID: Q16653

Background: Mediates homophilic cell-cell adhesion (By similarity). Minor component of the myelin sheath. May be involved in completion and/or maintenance of the myelin sheath and in cell-cell communication.

Immunogen: Recombinant protein of human Myelin oligodendrocyte glycoprotein

Applications: WB,IP

Recommended Dilutions: WB: 1/500-1/1000 IP: 1/20

Host Species: Rabbit

Clonality: Rabbit Monoclonal

Clone ID: R09-614

MW: Calculated MW: 28 kDa; Observed MW: 28 kDa

Isotype: IgG

Purification: Affinity Purified

Species Reactivity: Rat

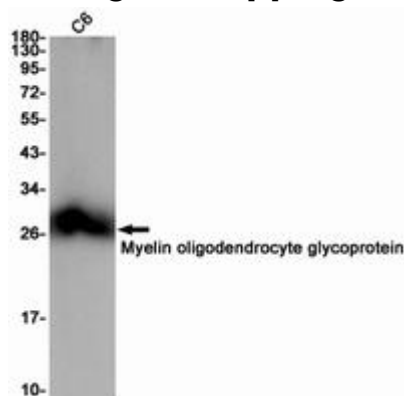
Conjugation: Unconjugated

Modification: Unmodified

Constituents: PBS (without Mg²⁺ and Ca²⁺), pH 7.3 containing 50% glycerol, 0.5% BSA and 0.02% sodium azide

Research Areas: Neuroscience

Storage & Shipping: Store at -20°C. Avoid repeated freezing and thawing



Western blot analysis of Myelin oligodendrocyte glycoprotein in C6 lysates using MOG antibody.



Product Description

Pioneering GTPase and Oncogene Product Development since 2010
