

MOG RABBIT PAB

Cat.#: N225879

Product Name: Anti-MOG Rabbit pAb

Synonyms: BTN6; BTNL1; MOGIG2; NRCLP7

UNIPROT ID: Q16653

Background: Mediates homophilic cell-cell adhesion (By similarity). Minor component of the myelin sheath. May be involved in completion and/or maintenance of the myelin sheath and in cell-cell communication.

Immunogen: A synthesized peptide derived from human Myelin oligodendrocyte glycoprotein

Applications: WB,IHC-P,ICC/IF

Recommended Dilutions: WB: 1/500-1/1000 IHC: 1/50-1/100 IF: 1/50-1/200

Host Species: Rabbit

Clonality: Rabbit Polyclonal

Clone ID: -

MW: Calculated MW: 28 kDa; Observed MW: 28 kDa

Isotype: IgG

Purification: Affinity Chromatography

Species Reactivity: Human,Mouse,Rat

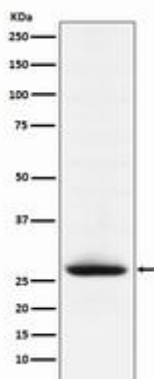
Conjugation: Unconjugated

Modification: Unmodified

Constituents: PBS (without Mg²⁺ and Ca²⁺), pH 7.3 containing 50% glycerol, 0.5% BSA and 0.02% sodium azide

Research Areas: Neuroscience

Storage & Shipping: Store at -20°C. Avoid repeated freezing and thawing



Western blot analysis of Myelin oligodendrocyte glycoprotein in mouse brain lysates using MOG antibody.



Product Description

Pioneering GTPase and Oncogene Product Development since 2010
