

## MONOAMINE OXIDASE A RABBIT MAB

**Cat.#:** N262532

**Product Name:** Anti-Monoamine Oxidase A Rabbit Monoclonal Antibody

**Synonyms:** MAOA; Amine oxidase [flavin-containing] A; Monoamine oxidase type A; MAO-A

**UNIPROT ID:** P21397

**Background:** Catalyzes the oxidative deamination of biogenic and xenobiotic amines and has important functions in the metabolism of neuroactive and vasoactive amines in the central nervous system and peripheral tissues.

**Immunogen:** A synthetic peptide of human Monoamine Oxidase A

**Applications:** WB,IHC-P

**Recommended Dilutions:** WB: 1/500-1/1000 IHC: 1/50-1/100

**Host Species:** Rabbit

**Clonality:** Rabbit Monoclonal

**Clone ID:** R07-913

**MW:** Calculated MW: 60 kDa; Observed MW: 60 kDa

**Isotype:** IgG

**Purification:** Affinity Purified

**Species Reactivity:** Human,Mouse,Rat

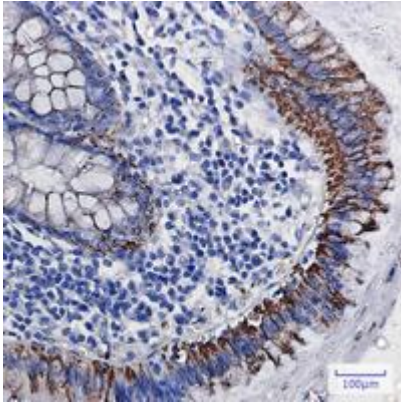
**Conjugation:** Unconjugated

**Modification:** Unmodified

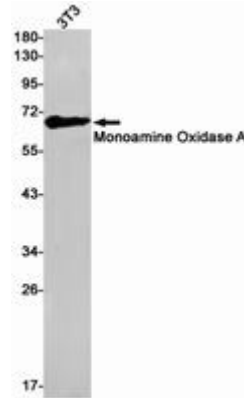
**Constituents:** PBS (without Mg<sup>2+</sup> and Ca<sup>2+</sup>), pH 7.3 containing 50% glycerol, 0.5% BSA and 0.02% sodium azide

**Research Areas:** Neuroscience

**Storage & Shipping:** Store at -20°C. Avoid repeated freezing and thawing



Immunohistochemistry analysis of paraffin-embedded Human colon cancer using Monoamine Oxidase A/MAOA antibody. High-pressure and temperature Sodium Citrate pH 6.0 was used for antigen retrieval.



Western blot analysis of Monoamine Oxidase A in C6 lysates using Monoamine Oxidase A antibody.