

MONOMETHYL-HISTONE H3 (LYS36) RABBIT PAB

Cat.#: N225629

Product Name: Anti-MonoMethyl-Histone H3 (Lys36) Rabbit pAb

Synonyms: H3K36me; H3/j; H3C1; H3C2; H3C3; H3C4; H3C6; H3C7; H3C8; H3FJ; H3C10; H3C11; HIST1H3J

UNIPROT ID: P68431

Background: H3 Core component of nucleosome. Nucleosomes wrap and compact DNA into chromatin, limiting DNA accessibility to the cellular machineries which require DNA as a template. Histones thereby play a central role in transcription regulation, DNA repair, DNA replication and chromosomal stability.

Immunogen: A synthesized peptide derived from human Histone H3 (mono methyl K36)

Applications: WB, ICC/IF

Recommended Dilutions: WB: 1/500-1/1000 IF: 1/50-1/200

Host Species: Rabbit

Clonality: Rabbit Polyclonal

Clone ID: -

MW: Calculated MW: 15 kDa; Observed MW: 15 kDa

Isotype: IgG

Purification: Affinity Chromatography

Species Reactivity: Human, Mouse

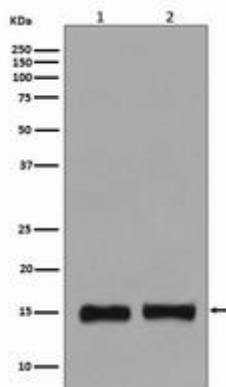
Conjugation: Unconjugated

Modification: Methylated

Constituents: PBS (without Mg²⁺ and Ca²⁺), pH 7.3 containing 50% glycerol, 0.5% BSA and 0.02% sodium azide

Research Areas: Epigenetics and Nuclear Signaling

Storage & Shipping: Store at -20°C. Avoid repeated freezing and thawing



Western blot analysis of Histone H3 (mono methyl K36) in (1) HeLa lysates; (2) NIH/3T3 lysates using MonoMethyl-Histone H3 (Lys36) antibody.