

## MPG RABBIT PAB

**Cat.#:** S210950

**Product Name:** Anti-MPG Rabbit Polyclonal Antibody

**Synonyms:** AAG; MDG; ADPG; APNG; Mid1; anpg; PIG11; PIG16; CRA36.1

**UNIPROT ID:** P29372 (Gene Accession - BC014991)

**Background:** Predicted to enable alkylbase DNA N-glycosylase activity. Predicted to be involved in base-excision repair. Located in cytosol and nucleoplasm.

**Immunogen:** Fusion protein of human MPG

**Applications:** ELISA, WB, IHC

**Recommended Dilutions:** IHC: 100-300;WB: 1000-5000;ELISA: 5000-10000

**Host Species:** Rabbit

**Clonality:** Rabbit Polyclonal

**Isotype:** Immunogen-specific rabbit IgG

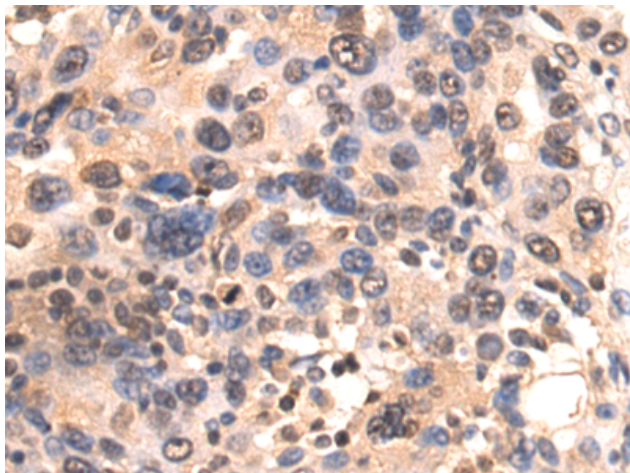
**Purification:** Antigen affinity purification

**Species Reactivity:** Human

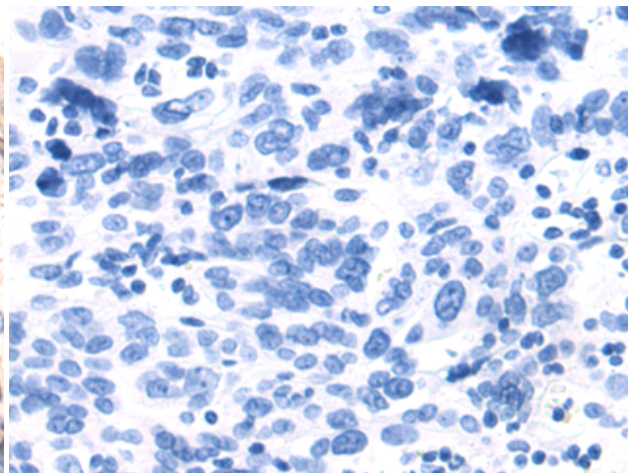
**Constituents:** PBS (without Mg<sup>2+</sup> and Ca<sup>2+</sup>), pH 7.4, 150 mM NaCl, 0.05% Sodium Azide and 40% glycerol

**Research Areas:** Epigenetics and Nuclear Signaling

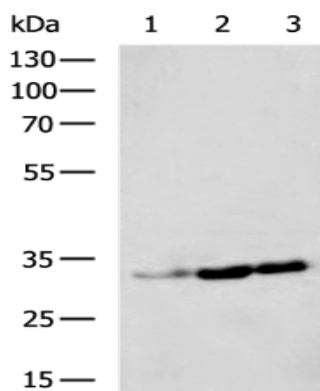
**Storage & Shipping:** Store at -20°C. Avoid repeated freezing and thawing



Immunohistochemistry analysis of paraffin embedded Human breast cancer tissue using 210950 (MPG Antibody) at a dilution of 1/120 (Nucleus and Cytoplasm).



In comparison with the IHC on the left, the same paraffin-embedded Human breast cancer tissue is first treated with the fusion protein and then with 210950 (Anti-MPG Antibody) at dilution 1/120.



Gel: 8% SDS-PAGE, Lysate: 40  $\mu$ g;  
 Lane 1-3: HepG2, LOVO, 293T cell lysates;  
 Primary antibody: 210950 (MPG Antibody) at dilution 1/1350;  
 Secondary antibody: HRP-conjugated Goat anti rabbit IgG at 1/5000 dilution;  
 Exposure time: 20 seconds