

## MRE11 RABBIT MAB

**Cat.#:** N262534

**Product Name:** Anti-Mre11 Rabbit Monoclonal Antibody

**Synonyms:** MRE11 homolog 1; Meiotic recombination 11 homolog A; MRE11 homolog A; MRE11A; HNGS1; MRE11

**UNIPROT ID:** P49959

**Background:** DNA double-strand breaks are generated by ionizing radiation and endogenously produced radicals, and they often are repaired through the RAD52 homologous recombination pathway. The complex possesses single-strand endonuclease activity and double-strand-specific 3'-5' exonuclease activity, which are provided by MRE11A. RAD50 may be required to bind DNA ends and hold them in close proximity.

**Immunogen:** Recombinant protein of human Mre11

**Applications:** WB,IHC-P

**Recommended Dilutions:** WB: 1/500-1/1000 IHC: 1/50-1/100

**Host Species:** Rabbit

**Clonality:** Rabbit Monoclonal

**Clone ID:** R03-6H9

**MW:** Calculated MW: 81 kDa; Observed MW: 81 kDa

**Isotype:** IgG

**Purification:** Affinity Purified

**Species Reactivity:** Human,Mouse,Rat

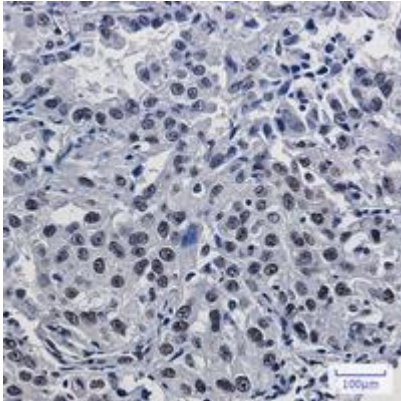
**Conjugation:** Unconjugated

**Modification:** Unmodified

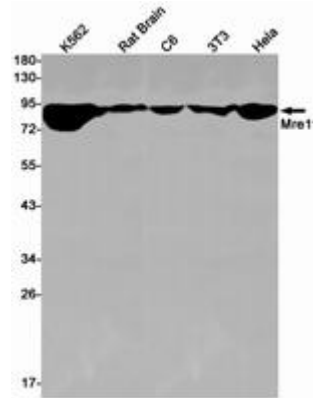
**Constituents:** PBS (without Mg<sup>2+</sup> and Ca<sup>2+</sup>), pH 7.3 containing 50% glycerol, 0.5% BSA and 0.02% sodium azide

**Research Areas:** Epigenetics and Nuclear Signaling

**Storage & Shipping:** Store at -20°C. Avoid repeated freezing and thawing



Immunohistochemistry analysis of paraffin-embedded Human lung cancer using Mre11 antibody. High-pressure and temperature Sodium Citrate pH 6.0 was used for antigen retrieval.



Western blot analysis of Mre11 in K562, rat Brain, C6, 3T3, HeLa lysates using Mre11 antibody.