

MRM1 RABBIT PAB

Cat.#: S212513

Product Name: Anti-MRM1 Rabbit Polyclonal Antibody

Synonyms:

UNIPROT ID: Q6IN84 (Gene Accession - BC009416)

Background: S-adenosyl-L-methionine-dependent 2'-O-ribose methyltransferase that catalyzes the formation of 2'-O-methylguanosine at position 1145 (Gm1145) in the 16S mitochondrial large subunit ribosomal RNA (mtLSU rRNA), a universally conserved modification in the peptidyl transferase domain of the mtLSU rRNA.

Immunogen: Fusion protein of human MRM1

Applications: ELISA, WB, IHC

Recommended Dilutions: IHC: 50-300;WB: 500-2000;ELISA: 5000-10000

Host Species: Rabbit

Clonality: Rabbit Polyclonal

Isotype: Immunogen-specific rabbit IgG

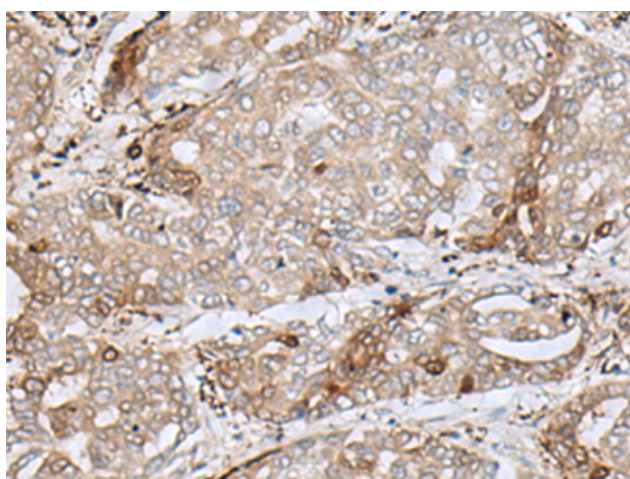
Purification: Antigen affinity purification

Species Reactivity: Human

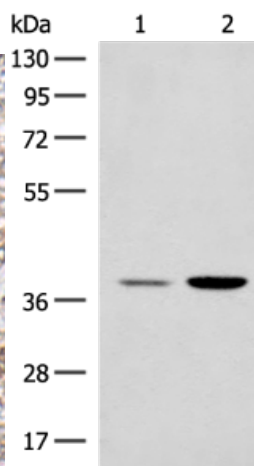
Constituents: PBS (without Mg²⁺ and Ca²⁺), pH 7.4, 150 mM NaCl, 0.05% Sodium Azide and 40% glycerol

Research Areas: Epigenetics and Nuclear Signaling

Storage & Shipping: Store at -20°C. Avoid repeated freezing and thawing



Immunohistochemistry analysis of paraffin-embedded Human liver cancer tissue using 212513(MRM1 Antibody) at a dilution of 1/85(Cytoplasm).



Gel: 8%SDS-PAGE, Lysate: 40 µg;
Lane 1-2: HEPG2 and K562 cell lysates;
Primary antibody: 212513(MRM1 Antibody) at dilution 1/400;
Secondary antibody: Goat anti rabbit IgG at 1/8000 dilution;
Exposure time: 20 seconds