

MRPL35 RABBIT PAB

Cat.#: N225132

Product Name: Anti-MRPL35 Rabbit pAb

Synonyms: MRPL35; BM-007; 39S ribosomal protein L35; mitochondrial; L35mt; MRP-L35

UNIPROT ID: Q9NZE8

Background: Mammalian mitochondrial ribosomal proteins are encoded by nuclear genes and help in protein synthesis within the mitochondrion. Mitochondrial ribosomes (mitoribosomes) consist of a small 28S subunit and a large 39S subunit.

Immunogen: Synthesized peptide derived from MRP-L35 . at AA range: 80-160

Applications: WB,ELISA

Recommended Dilutions: WB: 1/500-1/1000 ELISA: 1/10000

Host Species: Rabbit

Clonality: Rabbit Polyclonal

Clone ID: -

MW: Calculated MW: 22 kDa; Observed MW: 22 kDa

Isotype: IgG

Purification: Affinity Purified

Species Reactivity: Human,Mouse

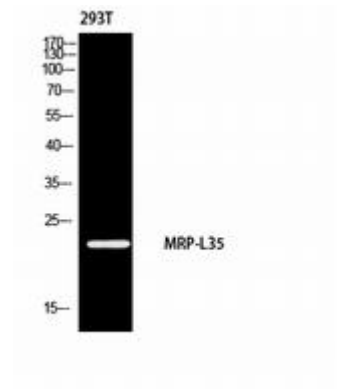
Conjugation: Unconjugated

Modification: Unmodified

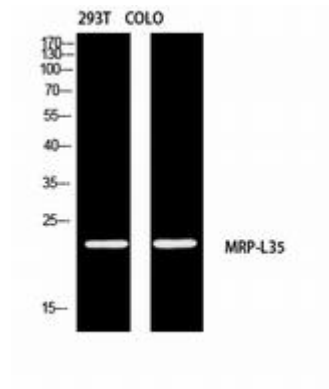
Constituents: PBS (without Mg²⁺ and Ca²⁺), pH 7.3 containing 50% glycerol, 0.5% BSA and 0.02% sodium azide

Research Areas: Tags & Cell Markers

Storage & Shipping: Store at -20°C. Avoid repeated freezing and thawing



Western blot analysis of MRPL35 in 293 lysates using MRPL35 antibody.



Western blot analysis of MRPL35 in 293T , COLO lysates using MRPL35 antibody.