

MRPL40 RABBIT PAB

Cat.#: S219258

Product Name: Anti-MRPL40 Rabbit Polyclonal Antibody

Synonyms: URIM; L40mt; NLVCF; MRPL22; MRP-L22; MRP-L40

UNIPROT ID: Q9NQ50 (Gene Accession - BC009707)

Background: Mammalian mitochondrial ribosomal proteins are encoded by nuclear genes and help in protein synthesis within the mitochondrion. Mitochondrial ribosomes (mitoribosomes) consist of a small 28S subunit and a large 39S subunit. They have an estimated 75% protein to rRNA composition compared to prokaryotic ribosomes, where this ratio is reversed. Another difference between mammalian mitoribosomes and prokaryotic ribosomes is that the latter contain a 5S rRNA. Among different species, the proteins comprising the mitoribosome differ greatly in sequence, and sometimes in biochemical properties, which prevents easy recognition by sequence homology. This gene encodes a 39S subunit protein. Deletions in this gene may contribute to the etiology of velo-cardio-facial syndrome and DiGeorge syndrome.

Immunogen: Fusion protein of human MRPL40

Applications: ELISA, WB, IHC

Recommended Dilutions: IHC: 100-300;WB: 1000-5000;ELISA: 5000-10000

Host Species: Rabbit

Clonality: Rabbit Polyclonal

Isotype: Immunogen-specific rabbit IgG

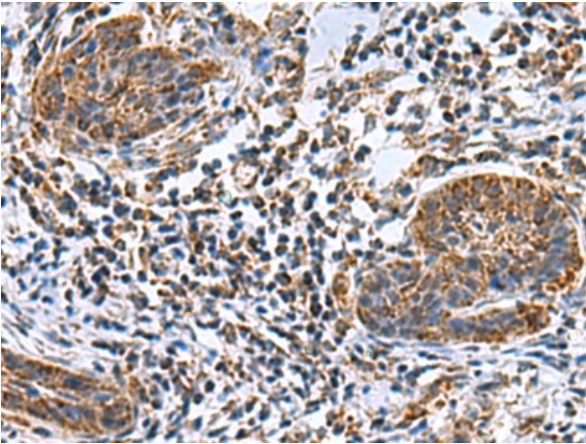
Purification: Antigen affinity purification

Species Reactivity: Human

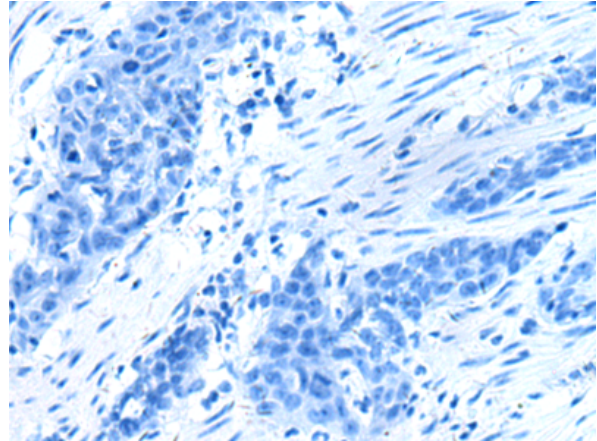
Constituents: PBS (without Mg²⁺ and Ca²⁺), pH 7.4, 150 mM NaCl, 0.05% Sodium Azide and 40% glycerol

Research Areas: Epigenetics and Nuclear Signaling

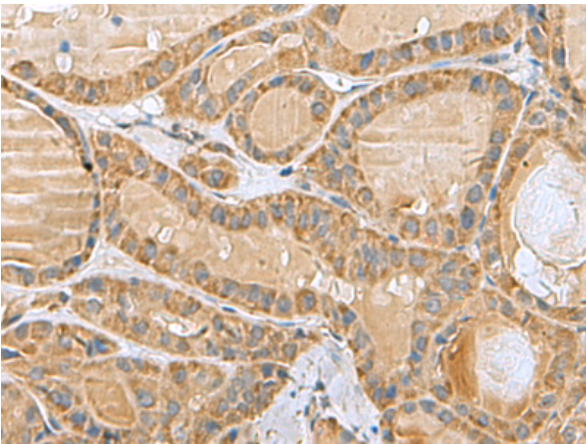
Storage & Shipping: Store at -20°C. Avoid repeated freezing and thawing



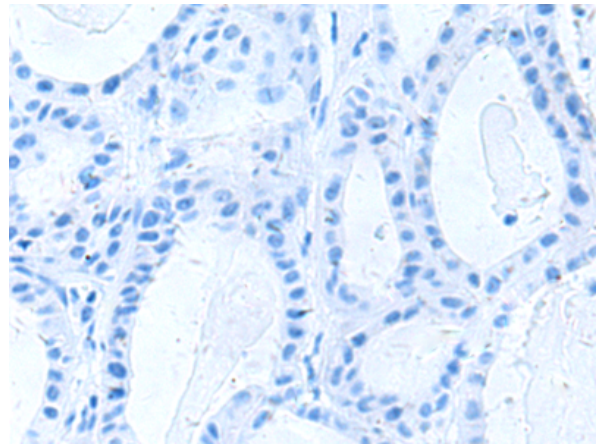
Immunohistochemistry analysis of paraffin embedded Human esophagus cancer tissue using 219258(MRPL40 Antibody) at a dilution of 1/80(Cytoplasm).



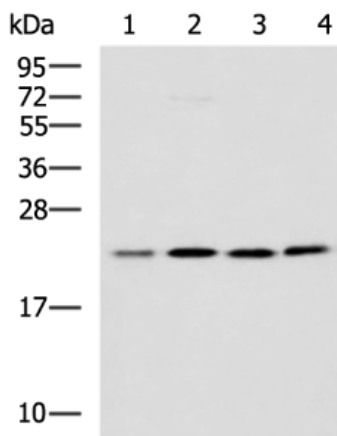
In comparison with the IHC on the left, the same paraffin-embedded Human esophagus cancer tissue is first treated with the fusion protein and then with 219258(Anti-MRPL40 Antibody) at dilution 1/80.



The image on the left is immunohistochemistry of paraffin-embedded Human thyroid cancer tissue using 219258(Anti-MRPL40 Antibody) at a dilution of 1/80.



In comparison with the IHC on the left, the same paraffin-embedded Human thyroid cancer tissue is first treated with fusion protein and then with D226143(Anti-MRPL40 Antibody) at dilution 1/80.



Gel: 12%SDS-PAGE, Lysate: 40 µg;
Lane 1-4: K562, A172, Jurkat, LOVO cell lysates;
Primary antibody: 219258(MRPL40 Antibody) at dilution 1/1000;
Secondary antibody: HRP-conjugated Goat anti rabbit IgG at 1/5000 dilution;
Exposure time: 1 minute



Product Description

Pioneering GTPase and Oncogene Product Development since 2010
