

## MRPS18B RABBIT MAB

**Cat.#:** N263434

**Product Name:** Anti-MRPS18B Rabbit Monoclonal Antibody

**Synonyms:** PTD017; S18amt; C6orf14; HSPC183; MRPS18-2; HumanS18 $\alpha$ ; MRP-S18-2

**UNIPROT ID:** Q9Y676

**Background:** Mammalian mitochondrial ribosomal proteins are encoded by nuclear genes and help in protein synthesis within the mitochondrion. Mitochondrial ribosomes (mitoribosomes) consist of a small 28S subunit and a large 39S subunit.

**Immunogen:** Recombinant protein of human MRPS18B

**Applications:** WB, ICC/IF, IP

**Recommended Dilutions:** WB: 1/500-1/1000 IF: 1/50-1/200 IP: 1/20

**Host Species:** Rabbit

**Clonality:** Rabbit Monoclonal

**Clone ID:** R05-0C8

**MW:** Calculated MW: 29 kDa; Observed MW: 29 kDa

**Isotype:** IgG

**Purification:** Affinity Purified

**Species Reactivity:** Human, Mouse, Rat

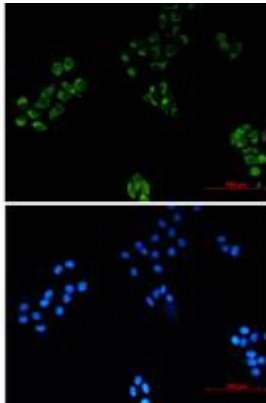
**Conjugation:** Unconjugated

**Modification:** Unmodified

**Constituents:** PBS (without Mg<sup>2+</sup> and Ca<sup>2+</sup>), pH 7.3 containing 50% glycerol, 0.5% BSA and 0.02% sodium azide

**Research Areas:** Epigenetics and Nuclear Signaling

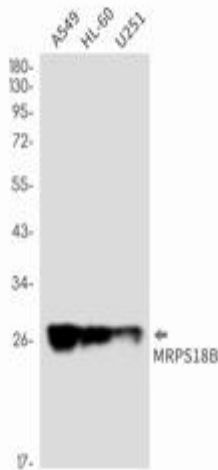
**Storage & Shipping:** Store at -20°C. Avoid repeated freezing and thawing



Immunocytochemistry analysis of MRPS18B (green) in HeLa using MRPS18B antibody, and DAPI (blue)



Western blot analysis of MRPS18B in Raw264.7 lysates using MRPS18B antibody.



Western blot analysis of MRPS18B in A549, HL-60, U251 lysates using MRPS18B antibody.