

## MRPS26 RABBIT MAB

**Cat.#:** N262535

**Product Name:** Anti-MRPS26 Rabbit Monoclonal Antibody

**Synonyms:** GI008; MRPS13; RPMS13; MRP-S13; MRP-S26; NY-BR-87; C20orf193; dJ534B8.3

**UNIPROT ID:** Q9BYN8

**Background:** Mammalian mitochondrial ribosomal proteins are encoded by nuclear genes and help in protein synthesis within the mitochondrion. Mitochondrial ribosomes (mitoribosomes) consist of a small 28S subunit and a large 39S subunit.

**Immunogen:** Recombinant protein of human MRPS26

**Applications:** WB, ICC/IF

**Recommended Dilutions:** WB: 1/500-1/1000 IF: 1/50-1/200

**Host Species:** Rabbit

**Clonality:** Rabbit Monoclonal

**Clone ID:** R01-2D6

**MW:** Calculated MW: 24 kDa; Observed MW: 24 kDa

**Isotype:** IgG

**Purification:** Affinity Purified

**Species Reactivity:** Human

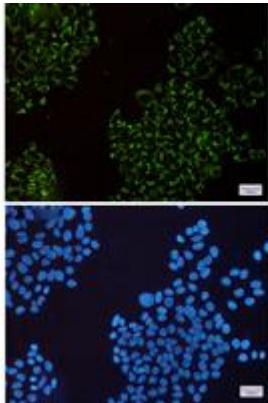
**Conjugation:** Unconjugated

**Modification:** Unmodified

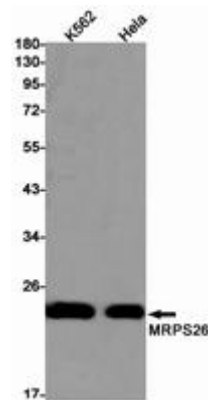
**Constituents:** PBS (without Mg<sup>2+</sup> and Ca<sup>2+</sup>), pH 7.3 containing 50% glycerol, 0.5% BSA and 0.02% sodium azide

**Research Areas:** Tags & Cell Markers

**Storage & Shipping:** Store at -20°C. Avoid repeated freezing and thawing



Immunocytochemistry analysis of MRPS26 (green) in HeLa using MRPS26 antibody, and DAPI (blue)



Western blot analysis of MRPS26 in K562, HeLa lysates using MRPS26 antibody.