

MS2 RABBIT MAB

Cat.#: N262537

Product Name: Anti-MS2 Rabbit Monoclonal Antibody

Synonyms: MS2; CD156; CD156a

UNIPROT ID: P78325

Background: Possible involvement in extravasation of leukocytes.

Immunogen: A synthetic peptide of MS2

Applications: WB,IP

Recommended Dilutions: WB: 1/500-1/1000 IP: 1/20

Host Species: Rabbit

Clonality: Rabbit Monoclonal

Clone ID: R07-8D8

MW: Calculated MW: 89 kDa; Observed MW: 89 kDa

Isotype: IgG

Purification: Affinity Purified

Species Reactivity: Human,Mouse

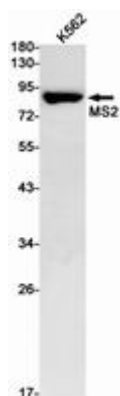
Conjugation: Unconjugated

Modification: Unmodified

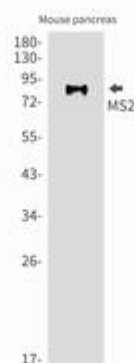
Constituents: PBS (without Mg²⁺ and Ca²⁺), pH 7.3 containing 50% glycerol, 0.5% BSA and 0.02% sodium azide

Research Areas: Cell Biology

Storage & Shipping: Store at -20°C. Avoid repeated freezing and thawing



Western blot analysis of MS2 in K562 lysates using MS2 antibody.



Western blot analysis of MS2 in mouse pancreas lysates using MS2 antibody.



Product Description

Pioneering GTPase and Oncogene Product Development since 2010
