

## MSH2 RABBIT PAB

**Cat.#:** S221854

**Product Name:** Anti-MSH2 Rabbit Polyclonal Antibody

**Synonyms:** FCC1; COCA1; HNPCC; LCFS2; HNPCC1

**UNIPROT ID:** P43246 (Gene Accession - NP\_000242 )

**Background:** This locus is frequently mutated in hereditary nonpolyposis colon cancer (HNPCC). When cloned, it was discovered to be a human homolog of the E. coli mismatch repair gene mutS, consistent with the characteristic alterations in microsatellite sequences (RER+ phenotype) found in HNPCC. Two transcript variants encoding different isoforms have been found for this gene.

**Immunogen:** Synthetic peptide of human MSH2

**Applications:** ELISA, WB, IHC

**Recommended Dilutions:** IHC: 20-100;WB: 200-1000;ELISA: 1000-2000

**Host Species:** Rabbit

**Clonality:** Rabbit Polyclonal

**Isotype:** Immunogen-specific rabbit IgG

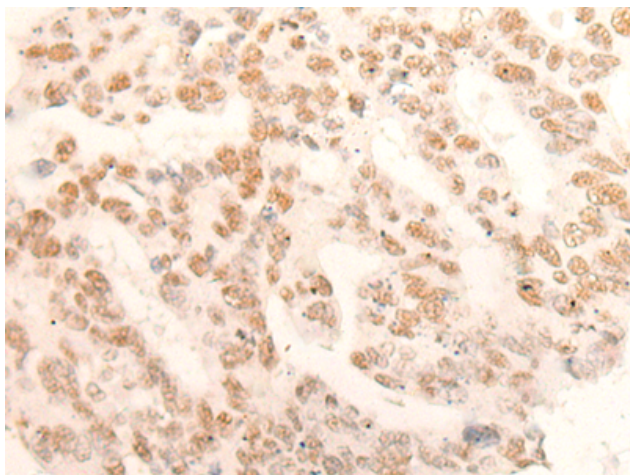
**Purification:** Antigen affinity purification

**Species Reactivity:** Human, Mouse

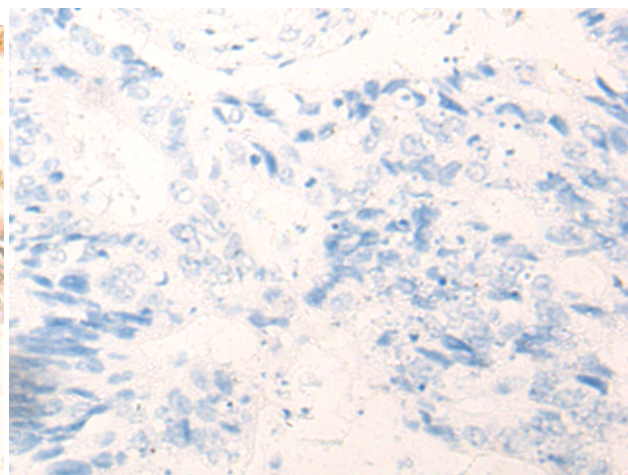
**Constituents:** PBS (without Mg<sup>2+</sup> and Ca<sup>2+</sup>), pH 7.4, 150 mM NaCl, 0.05% Sodium Azide and 40% glycerol

**Research Areas:** Epigenetics and Nuclear Signaling, Cancer

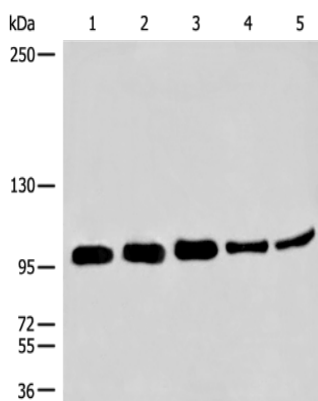
**Storage & Shipping:** Store at -20°C. Avoid repeated freezing and thawing



Immunohistochemistry analysis of paraffin embedded Human colorectal cancer tissue using 221854(MSH2 Antibody) at a dilution of 1/20(Nucleus).



In comparison with the IHC on the left, the same paraffin-embedded Human colorectal cancer tissue is first treated with the synthetic peptide and then with 221854(Anti-MSH2 Antibody) at dilution 1/20.



Gel: 6%SDS-PAGE, Lysate: 40  $\mu$ g;  
 Lane 1-5: HEPG2, 293T, SKOV3, HeLa and A172 cell lysates;  
 Primary antibody: 221854(MSH2 Antibody) at dilution 1/200;  
 Secondary antibody: Goat anti rabbit IgG at 1/8000 dilution;  
 Exposure time: 30 seconds