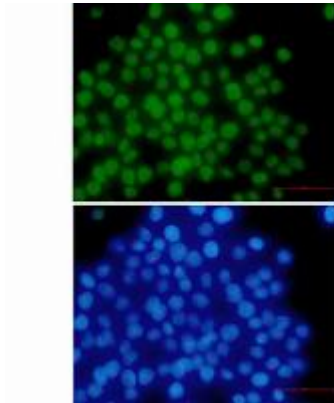
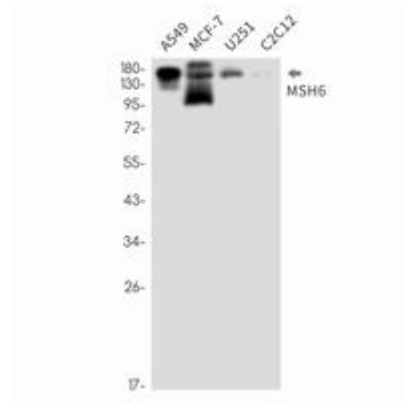


MSH6 RABBIT MAB**Cat.#:** N263435**Product Name:** Anti-MSH6 Rabbit Monoclonal Antibody**Synonyms:** MSH6; GTBP; DNA mismatch repair protein Msh6; hMSH6; G/T mismatch-binding protein; GTBP; GTMBP; MutS-alpha 160 kDa subunit; p160**UNIPROT ID:** P52701**Background:** The DNA mismatch repair system (MMR) repairs post-replication DNA, inhibits recombination between nonidentical DNA sequences, and induces both checkpoint and apoptotic responses following certain types of DNA damage. MSH2 (MutS homologue 2) forms the hMutS- α dimer with MSH6 and is an essential component of the mismatch repair process.**Immunogen:** A synthetic peptide of human MSH6**Applications:** WB, ICC/IF, IP**Recommended Dilutions:** WB: 1/500-1/1000 IF: 1/50-1/200 IP: 1/20**Host Species:** Rabbit**Clonality:** Rabbit Monoclonal**Clone ID:** R02-6G6**MW:** Calculated MW: 153 kDa; Observed MW: 163 kDa**Isotype:** IgG**Purification:** Affinity Purified**Species Reactivity:** Human, Mouse**Conjugation:** Unconjugated**Modification:** Unmodified**Constituents:** PBS (without Mg^{2+} and Ca^{2+}), pH 7.3 containing 50% glycerol, 0.5% BSA and 0.02% sodium azide**Research Areas:** Epigenetics and Nuclear Signaling**Storage & Shipping:** Store at $-20^{\circ}C$. Avoid repeated freezing and thawing



Immunocytochemistry analysis of MSH6 (green) in HeLa using MSH6 antibody, and DAPI (blue)



Western blot analysis of MSH6 in A549, MCF-7, U251, C2C12 lysates using MSH6 antibody.