

## MSRB3 RABBIT PAB

**Cat.#:** S222445

**Product Name:** Anti-MSRB3 Rabbit Polyclonal Antibody

**Synonyms:** DFNB74

**UNIPROT ID:** Q8IXL7 (Gene Accession - NP\_932346 )

**Background:** The protein encoded by this gene catalyzes the reduction of methionine sulfoxide to methionine. This enzyme acts as a monomer and requires zinc as a cofactor. Several transcript variants encoding two different isoforms have been found for this gene. One of the isoforms localizes to mitochondria while the other localizes to endoplasmic reticula.

**Immunogen:** Synthetic peptide of human MSRB3

**Applications:** ELISA, IHC

**Recommended Dilutions:** IHC: 50-200; ELISA: 5000-10000

**Host Species:** Rabbit

**Clonality:** Rabbit Polyclonal

**Isotype:** Immunogen-specific rabbit IgG

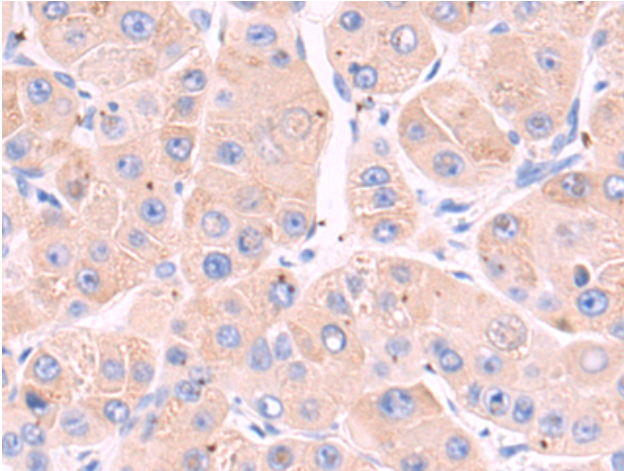
**Purification:** Antigen affinity purification

**Species Reactivity:** Human

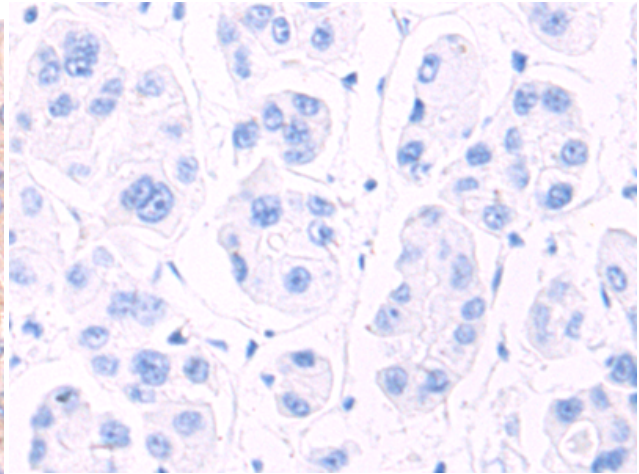
**Constituents:** PBS (without Mg<sup>2+</sup> and Ca<sup>2+</sup>), pH 7.4, 150 mM NaCl, 0.05% Sodium Azide and 40% glycerol

**Research Areas:** Signal Transduction, Cell Biology, Metabolism

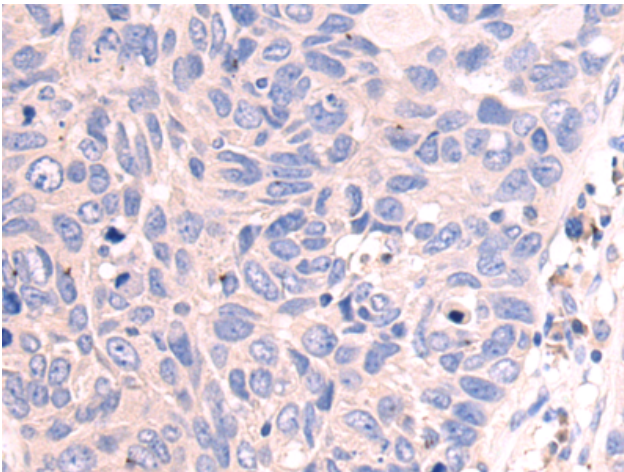
**Storage & Shipping:** Store at -20°C. Avoid repeated freezing and thawing



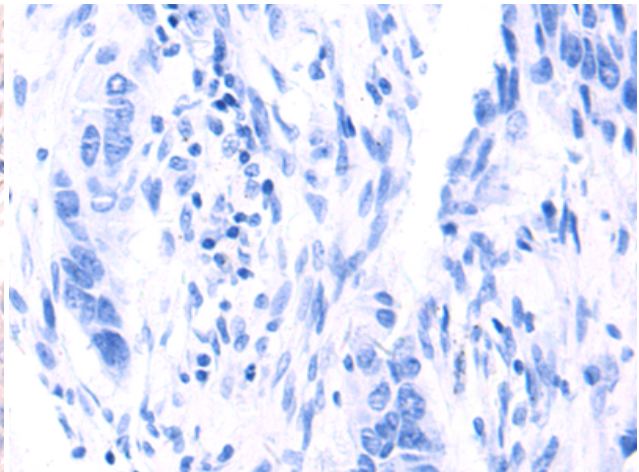
Immunohistochemistry analysis of paraffin embedded Human liver cancer tissue using 222445 (MSRB3 Antibody) at a dilution of 1/50 (Cytoplasm).



In comparison with the IHC on the left, the same paraffin-embedded Human liver cancer tissue is first treated with the synthetic peptide and then with 222445 (Anti-MSRB3 Antibody) at dilution 1/50.



The image on the left is immunohistochemistry of paraffin-embedded Human lung cancer tissue using 222445 (Anti-MSRB3 Antibody) at a dilution of 1/50.



In comparison with the IHC on the left, the same paraffin-embedded Human lung cancer tissue is first treated with synthetic peptide and then with D264618 (Anti-MSRB3 Antibody) at dilution 1/50.