

## MSTN RABBIT PAB

**Cat.#:** S213565

**Product Name:** Anti-MSTN Rabbit Polyclonal Antibody

**Synonyms:** GDF8, MSLHP

**UNIPROT ID:** O14793 (Gene Accession - NP\_005250 )

**Background:** The protein encoded by this gene is a member of the bone morphogenetic protein (BMP) family and the TGF-beta superfamily. This group of proteins is characterized by a polybasic proteolytic processing site which is cleaved to produce a mature protein containing seven conserved cysteine residues. The members of this family are regulators of cell growth and differentiation in both embryonic and adult tissues. This gene is thought to encode a secreted protein which negatively regulates skeletal muscle growth.

**Immunogen:** Synthetic peptide of human MSTN

**Applications:** ELISA, IHC

**Recommended Dilutions:** IHC: 20-May; ELISA: 1000-2000

**Host Species:** Rabbit

**Clonality:** Rabbit Polyclonal

**Isotype:** Immunogen-specific rabbit IgG

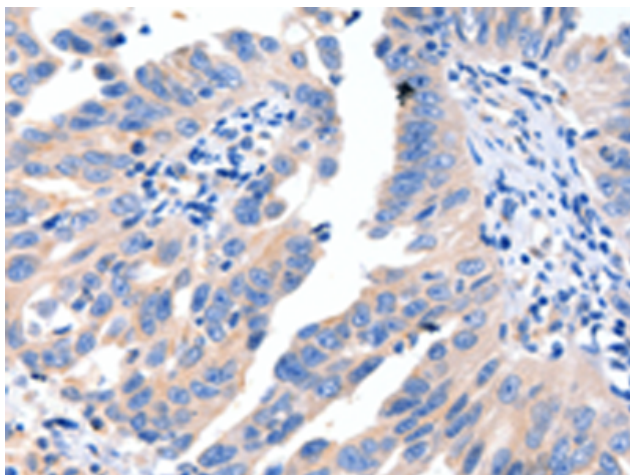
**Purification:** Antigen affinity purification

**Species Reactivity:** Human, Mouse, Rat

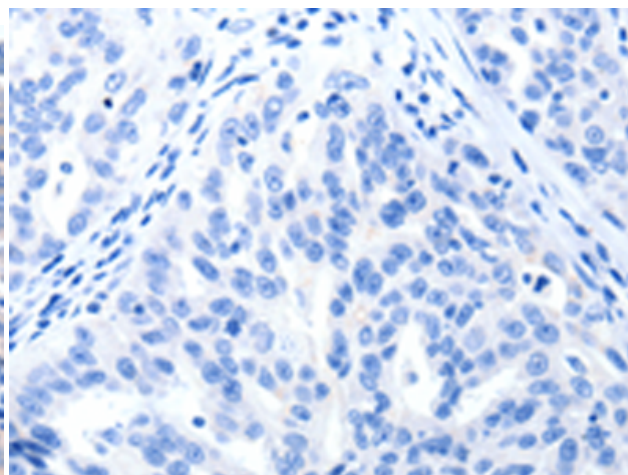
**Constituents:** PBS (without Mg<sup>2+</sup> and Ca<sup>2+</sup>), pH 7.4, 150 mM NaCl, 0.05% Sodium Azide and 40% glycerol

**Research Areas:** Signal Transduction, Cancer, Neuroscience

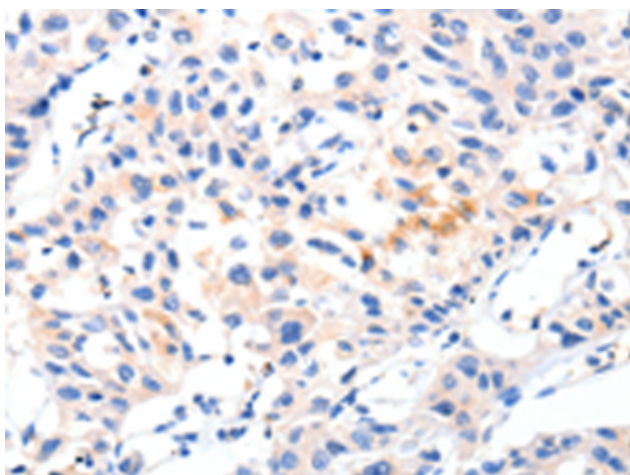
**Storage & Shipping:** Store at -20°C. Avoid repeated freezing and thawing



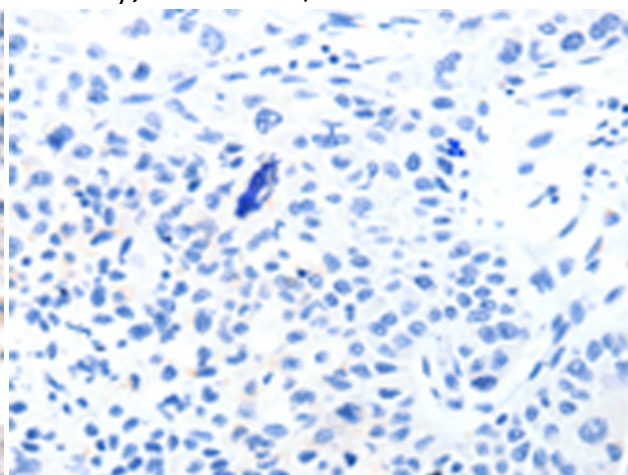
Immunohistochemistry analysis of paraffin embedded Human breast cancer tissue using 213565(MSTN Antibody) at a dilution of 1/8(Cytoplasm).



In comparison with the IHC on the left, the same paraffin-embedded Human breast cancer tissue is first treated with the synthetic peptide and then with 213565(Anti-MSTN Antibody) at dilution 1/8.



The image on the left is immunohistochemistry of paraffin-embedded Human lung cancer tissue using 213565(Anti-MSTN Antibody) at a dilution of 1/8.



In comparison with the IHC on the left, the same paraffin-embedded Human lung cancer tissue is first treated with synthetic peptide and then with D160418(Anti-MSTN Antibody) at dilution 1/8.