

## MT-CO2 RABBIT PAB

**Cat.#:** S219604

**Product Name:** Anti-MT-CO2 Rabbit Polyclonal Antibody

**Synonyms:** COII; MTCO2; COX2

**UNIPROT ID:** P00403 (Gene Accession - YP\_003024029 )

**Background:** Cytochrome c oxidase is the component of the respiratory chain that catalyzes the reduction of oxygen to water. Subunits 1-3 form the functional core of the enzyme complex. Subunit 2 transfers the electrons from cytochrome c via its binuclear copper A center to the bimetallic center of the catalytic subunit 1.

**Immunogen:** Synthetic peptide of human MT-CO2

**Applications:** ELISA, WB, IHC

**Recommended Dilutions:** IHC: 50-200;WB: 1000-5000;ELISA: 5000-10000

**Host Species:** Rabbit

**Clonality:** Rabbit Polyclonal

**Isotype:** Immunogen-specific rabbit IgG

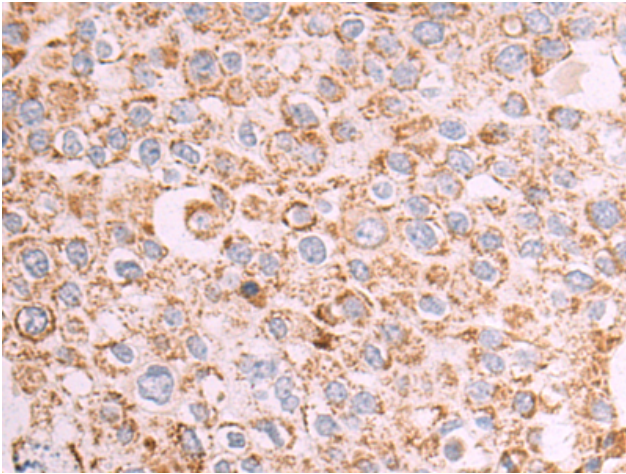
**Purification:** Antigen affinity purification

**Species Reactivity:** Human

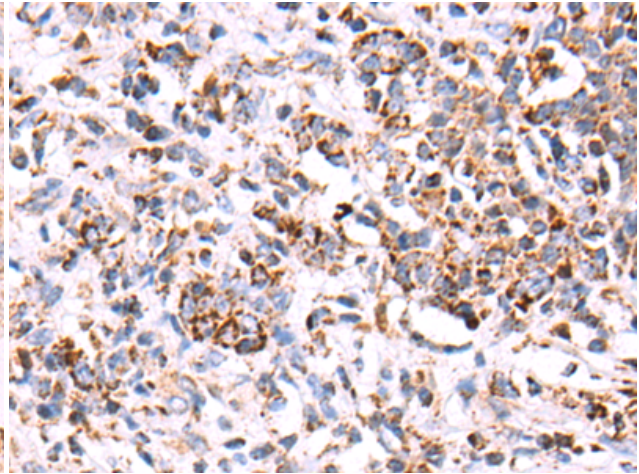
**Constituents:** PBS (without Mg<sup>2+</sup> and Ca<sup>2+</sup>), pH 7.4, 150 mM NaCl, 0.05% Sodium Azide and 40% glycerol

**Research Areas:** Metabolism, Cancer

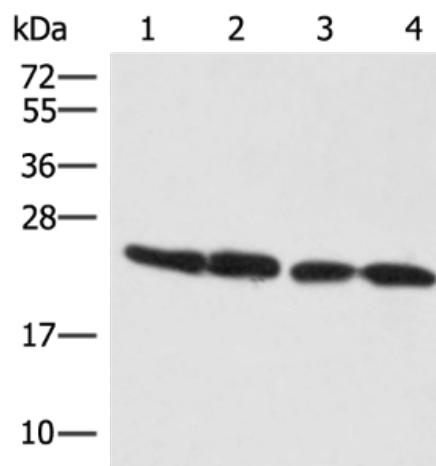
**Storage & Shipping:** Store at -20°C. Avoid repeated freezing and thawing



Immunohistochemistry analysis of paraffin-embedded Human breast cancer tissue using 219604(MT-CO2 Antibody) at a dilution of 1/50(Cytoplasm).



Immunohistochemistry analysis of paraffin-embedded Human gastric cancer tissue using 219604(Anti-MT-CO2 Antibody) at a dilution of 1/50.



Gel: 12%SDS-PAGE, Lysate: 40  $\mu$ g;  
 Lane 1-4: K562, 293T, 231 and A549 cell lysates;  
 Primary antibody: 219604(MT-CO2 Antibody) at dilution 1/800;  
 Secondary antibody: Goat anti rabbit IgG at 1/8000 dilution;  
 Exposure time: 5 seconds

