

## MT-CYB RABBIT PAB

**Cat.#:** S220490

**Product Name:** Anti-MT-CYB Rabbit Polyclonal Antibody

**Synonyms:** MTCYB; CYTB

**UNIPROT ID:** P00156 (Gene Accession - YP\_003024038 )

**Background:** Cytochrome b is a component of the ubiquinol-cytochrome c reductase complex, which is a respiratory chain that generates an electrochemical potential, coupled to ATP synthesis. The principal components of the b-c1 complex are cytochrome b, cytochrome c1, and the rieske protein. Cytochrome b possesses two heme groups, which are not covalently attached to the protein. Mutations in cytochrome b are associated with Leber's hereditary optic neuropathy and with myopathy.

**Immunogen:** Synthetic peptide of human MT-CYB

**Applications:** ELISA, IHC

**Recommended Dilutions:** IHC: 50-200; ELISA: 2000-5000

**Host Species:** Rabbit

**Clonality:** Rabbit Polyclonal

**Isotype:** Immunogen-specific rabbit IgG

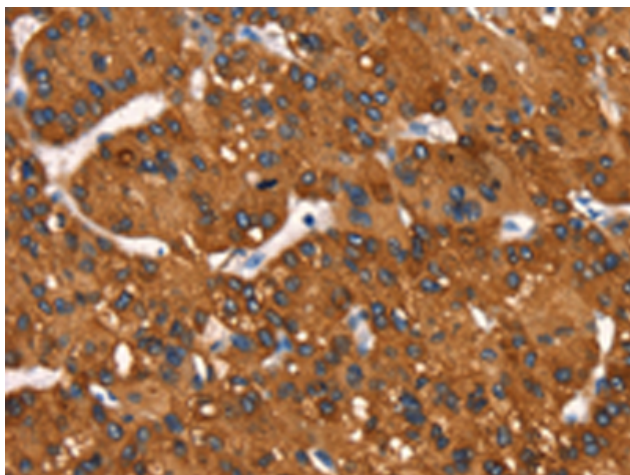
**Purification:** Antigen affinity purification

**Species Reactivity:** Human

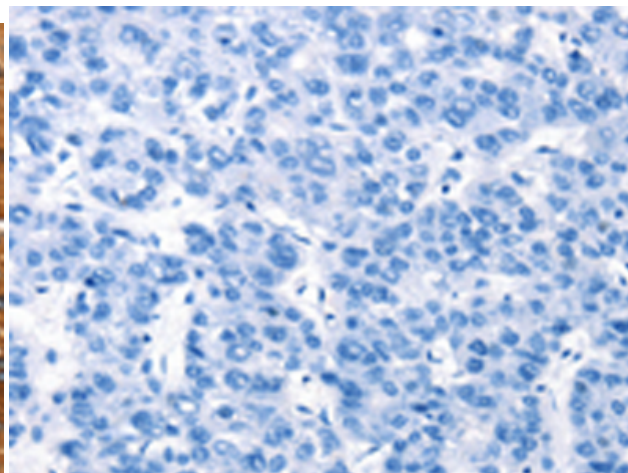
**Constituents:** PBS (without Mg<sup>2+</sup> and Ca<sup>2+</sup>), pH 7.4, 150 mM NaCl, 0.05% Sodium Azide and 40% glycerol

**Research Areas:** Metabolism, Cancer

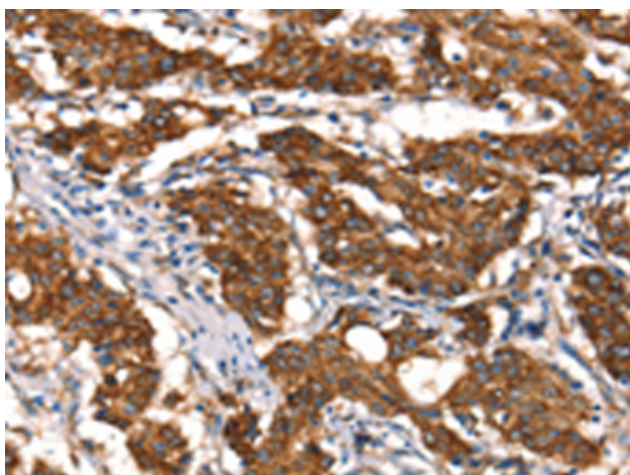
**Storage & Shipping:** Store at -20°C. Avoid repeated freezing and thawing



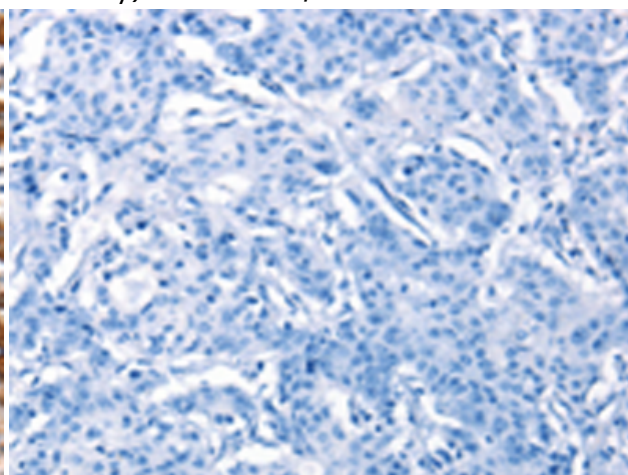
Immunohistochemistry analysis of paraffin embedded Human liver cancer tissue using 220490(MT-CYB Antibody) at a dilution of 1/50(Cytoplasm).



In comparison with the IHC on the left, the same paraffin-embedded Human liver cancer tissue is first treated with the synthetic peptide and then with 220490(Anti-MT-CYB Antibody) at dilution 1/50.



The image on the left is immunohistochemistry of paraffin-embedded Human gastric cancer tissue using 220490(Anti-MT-CYB Antibody) at a dilution of 1/50.



In comparison with the IHC on the left, the same paraffin-embedded Human gastric cancer tissue is first treated with synthetic peptide and then with D261603(Anti-MT-CYB Antibody) at dilution 1/50.