

## MTAP RABBIT MAB

**Cat.#:** N263438

**Product Name:** Anti-MTAP Rabbit Monoclonal Antibody

**Synonyms:** BDMF; MSAP; DMSFH; LGMBF; DMSMFH; c86fus; HEL-249

**UNIPROT ID:** Q13126

**Background:** This gene encodes an enzyme that plays a major role in polyamine metabolism and is important for the salvage of both adenine and methionine. The encoded enzyme is deficient in many cancers because this gene and the tumor suppressor p16 gene are co-deleted. Multiple alternatively spliced transcript variants have been described for this gene, but their full-length natures remain unknown. [provided by RefSeq, Jul 2008]

**Immunogen:** A synthetic peptide of human MTAP

**Applications:** WB,IP

**Recommended Dilutions:** WB: 1/500-1/1000 IP: 1/20

**Host Species:** Rabbit

**Clonality:** Rabbit Monoclonal

**Clone ID:** R03-411

**MW:** Calculated MW: 31 kDa; Observed MW: 31 kDa

**Isotype:** IgG

**Purification:** Affinity Purified

**Species Reactivity:** Human,Mouse,Rat

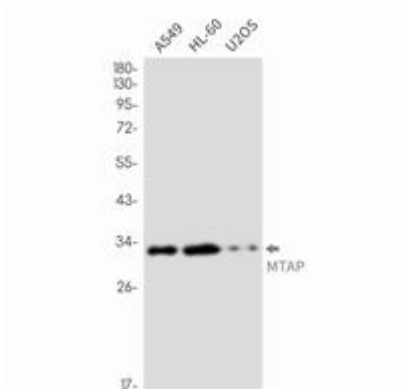
**Conjugation:** Unconjugated

**Modification:** Unmodified

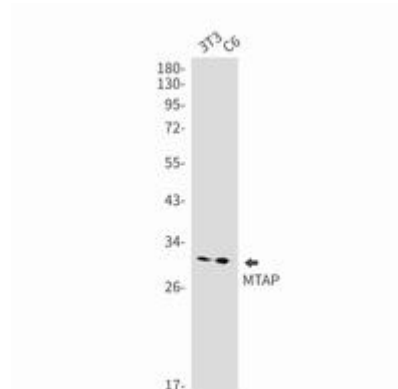
**Constituents:** PBS (without Mg<sup>2+</sup> and Ca<sup>2+</sup>), pH 7.3 containing 50% glycerol, 0.5% BSA and 0.02% sodium azide

**Research Areas:** Signal Transduction

**Storage & Shipping:** Store at -20°C. Avoid repeated freezing and thawing



Western blot analysis of MTAP in A549, HL-60, U2OS lysates using MTAP antibody.



Western blot analysis of MTAP in 3T3, C6 lysates using MTAP antibody.