

MTCH2 RABBIT PAB

Cat.#: S217616

Product Name: Anti-MTCH2 Rabbit Polyclonal Antibody

Synonyms: MIMP; HSPC032; SLC25A50

UNIPROT ID: Q9Y6C9 (Gene Accession - BC000875)

Background: Mitochondrial carrier homolog 2 also known as MTCH2 is a protein which in humans is encoded by the MTCH2 gene. MTCH2 (mitochondrial carrier homolog 2), is a 303 amino acid multi-pass mitochondrial membrane protein that contains two solcar repeats and functions to induce mitochondrial depolarization. The substrate transported is not yet known. Induces mitochondrial depolarization.

Immunogen: Fusion protein of human MTCH2

Applications: ELISA, WB, IHC

Recommended Dilutions: IHC: 50-200;WB: 1000-5000;ELISA: 2000-10000

Host Species: Rabbit

Clonality: Rabbit Polyclonal

Isotype: Immunogen-specific rabbit IgG

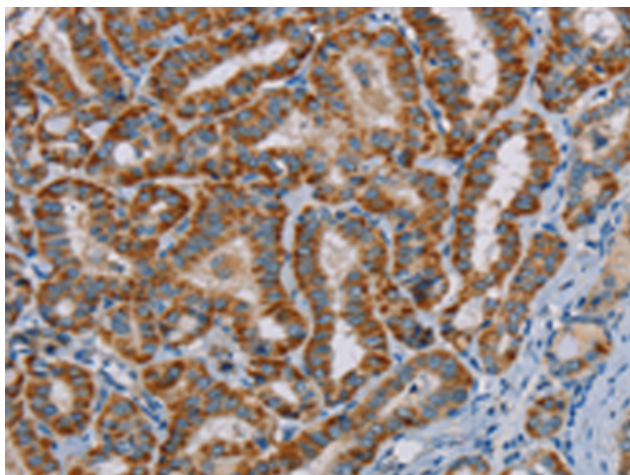
Purification: Antigen affinity purification

Species Reactivity: Human, Mouse

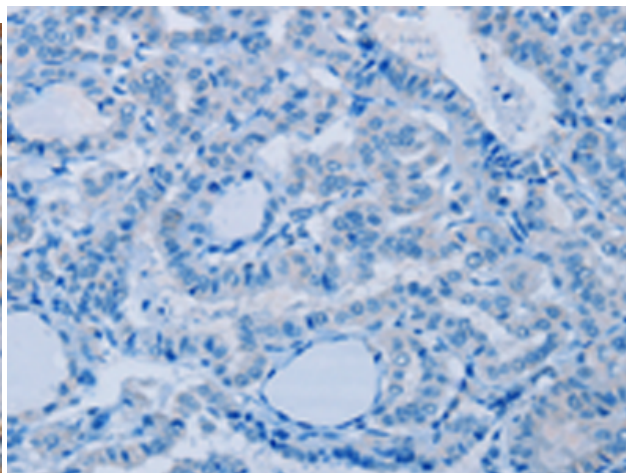
Constituents: PBS (without Mg²⁺ and Ca²⁺), pH 7.4, 150 mM NaCl, 0.05% Sodium Azide and 40% glycerol

Research Areas: Metabolism, Cancer

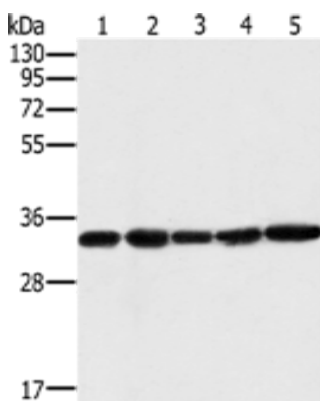
Storage & Shipping: Store at -20°C. Avoid repeated freezing and thawing



Immunohistochemistry analysis of paraffin embedded Human thyroid cancer tissue using 217616(MTCH2 Antibody) at a dilution of 1/45(Cytoplasm).



In comparison with the IHC on the left, the same paraffin-embedded Human thyroid cancer tissue is first treated with the fusion protein and then with 217616(Anti-MTCH2 Antibody) at dilution 1/45.



Gel: 10%SDS-PAGE, Lysate: 40 µg;
 Lane 1-5: Human testis tissue, K562 cells, PC3 cells, human liver cancer tissue, hela cells;
 Primary antibody: 217616(MTCH2 Antibody) at dilution 1/400;
 Secondary antibody: Goat anti rabbit IgG at 1/8000 dilution;
 Exposure time: 40 seconds