

## MTCO2 RABBIT MAB

**Cat.#:** N262543

**Product Name:** Anti-MTCO2 Rabbit Monoclonal Antibody

**Synonyms:** MT-CO2; COX2; CO2; Cytochrome c oxidase II; MTCO2; COII; COXII

**UNIPROT ID:** P00403

**Background:** Cytochrome c oxidase is the component of the respiratory chain that catalyzes the reduction of oxygen to water. Subunits 1-3 form the functional core of the enzyme complex. Subunit 2 transfers the electrons from cytochrome c via its binuclear copper A center to the bimetallic center of the catalytic subunit 1.

**Immunogen:** A synthetic peptide of human MTCO2

**Applications:** WB,IHC-F,IHC-P,ICC/IF,IP

**Recommended Dilutions:** WB: 1/500-1/1000 IHC: 1/50-1/100 IF: 1/50-1/200 IP: 1/20

**Host Species:** Rabbit

**Clonality:** Rabbit Monoclonal

**Clone ID:** R05-2E2

**MW:** Calculated MW: 26 kDa; Observed MW: 21 kDa

**Isotype:** IgG

**Purification:** Affinity Purified

**Species Reactivity:** Human

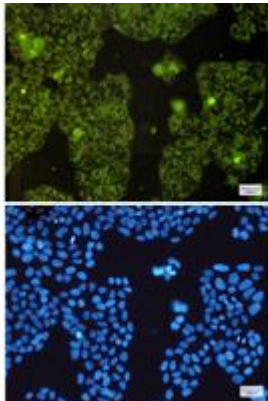
**Conjugation:** Unconjugated

**Modification:** Unmodified

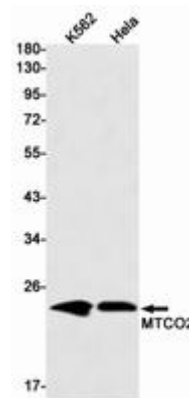
**Constituents:** PBS (without Mg<sup>2+</sup> and Ca<sup>2+</sup>), pH 7.3 containing 50% glycerol, 0.5% BSA and 0.02% sodium azide

**Research Areas:** Signal Transduction

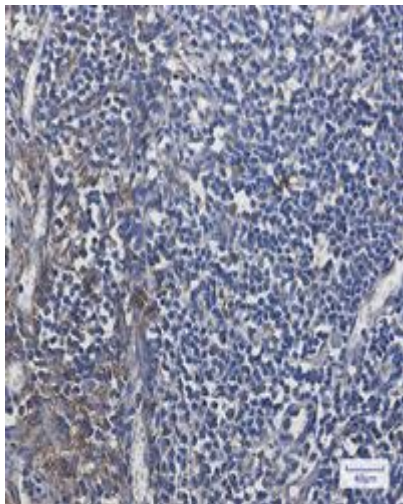
**Storage & Shipping:** Store at -20°C. Avoid repeated freezing and thawing



Immunocytochemistry analysis of MTCO2 (green) in HeLa using MTCO2 antibody, and DAPI (blue)



Western blot analysis of MTCO2 in K562, HeLa lysates using MTCO2 antibody.



Immunohistochemistry analysis of paraffin-embedded Human tonsil using MTCO2 antibody. High-pressure and temperature Sodium Citrate pH 6.0 was used for antigen retrieval.