

## MTFP1 RABBIT PAB

**Cat.#:** S217620

**Product Name:** Anti-MTFP1 Rabbit Polyclonal Antibody

**Synonyms:** MTP18; HSPC242

**UNIPROT ID:** Q9UDX5 (Gene Accession - BC046132 )

**Background:** MTP18 is a mitochondrial protein and downstream target of the phosphatidylinositol 3-kinase (see PIK3CA, MIM 171834) signaling pathway that plays a role in cell viability and mitochondrial dynamics.

**Immunogen:** Fusion protein of human MTFP1

**Applications:** ELISA, WB, IHC

**Recommended Dilutions:** IHC: 100-300;WB: 500-2000;ELISA: 5000-10000

**Host Species:** Rabbit

**Clonality:** Rabbit Polyclonal

**Isotype:** Immunogen-specific rabbit IgG

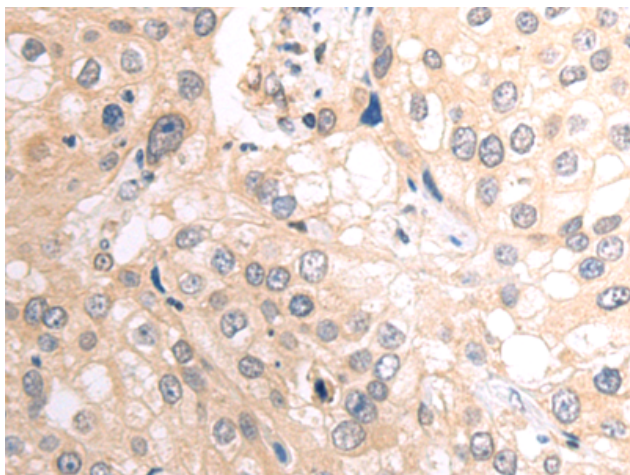
**Purification:** Antigen affinity purification

**Species Reactivity:** Human, Mouse

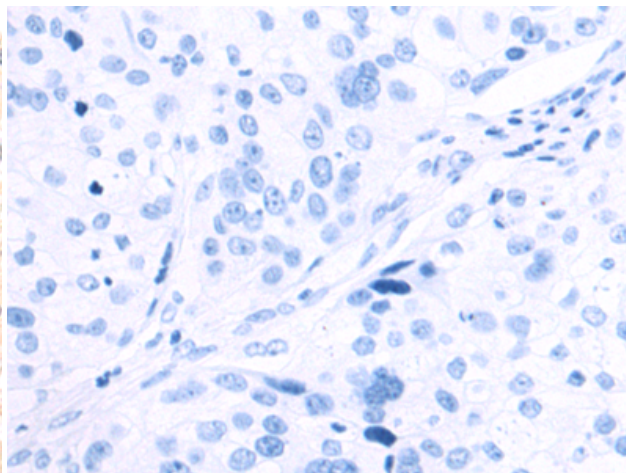
**Constituents:** PBS (without Mg<sup>2+</sup> and Ca<sup>2+</sup>), pH 7.4, 150 mM NaCl, 0.05% Sodium Azide and 40% glycerol

**Research Areas:** Cancer, Metabolism, Cardiovascular

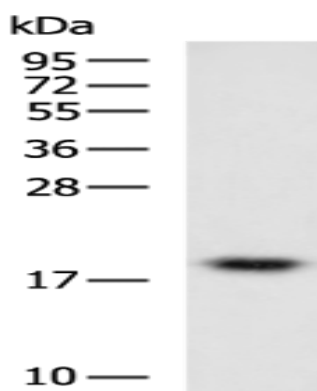
**Storage & Shipping:** Store at -20°C. Avoid repeated freezing and thawing



Immunohistochemistry analysis of paraffin embedded Human cervical cancer tissue using 217620(MTFP1 Antibody) at a dilution of 1/120(Cytoplasm).



In comparison with the IHC on the left, the same paraffin-embedded Human cervical cancer tissue is first treated with the fusion protein and then with 217620(Anti-MTFP1 Antibody) at dilution 1/120.



Gel: 12%SDS-PAGE, Lysate: 40  $\mu$ g;  
Lane: Mouse heart tissue lysate;  
Primary antibody: 217620(MTFP1 Antibody) at dilution 1/700;  
Secondary antibody: HRP-conjugated Goat anti rabbit IgG at 1/5000 dilution;  
Exposure time: 20 seconds